



Silver & Vertu

TUESDAY 12TH OCTOBER AT 10am



Alexis Butcher
Silver

alex.butcher@lawrences.co.uk



1

A SCOTTISH FIDDLE PATTERN TODDY LADLE

initialled "C", by Robert Gray & Sons of Glasgow 1835, a pair of Fiddle toddy ladles, initialled "WG", maker's mark "RC", Edinburgh 1834 and a Victorian Fiddle pattern sauce ladle, initialled "MEH", by Messrs. Lias, London 1855; 5.1oz (4)

£70-90



4

AN EARLY 19TH CENTURY FRENCH PART-SERVICE OF FLATWARE IN A VARIET OF QUEEN'S PATTERN TO INCLUDE:-

Six table spoons, six table forks and six tea spoons, each engraved with a coat of arms and order, maker's mark "F.L.", Paris 1819-1838 (contained in a lined and fitted case); 46.55oz

£500-600



6

A GEORGE III COLLECTED SERVICE OF OLD ENGLISH THREAD PATTERN FLATWARE (SINGLE-STRUCK), TO INCLUDE:-

Six table spoons, twenty table forks, eight dessert spoons, sixteen dessert forks and seven tea spoons, crested, all by Thomas Ollivant (of Manchester), London 1796 together with two table spoons, twelve dessert spoons & three sauce ladles, crested, by various makers, London 1794-1805, a set of six double-struck table spoons, crested, by Richard Crossley, London 1792/94, a set of eight William IV tea spoons, crested, W. Theobalds & Locking Bunn, London 1834 and a set of twelve contemporary table knives and twelve side knives with Old English Thread pattern handles and stainless steel blades, maker's mark "T.S", Sheffield 1997; 133.5oz weighable silver

£1500-1800



8

A GEORGE II IRISH HANOVERIAN PATTERN BASTING OR SERVING SPOON

with a pronounced rib and a single drop, by Christopher Skinner, Dublin 1750; 15.75" (40cm) long; 7.45oz

£400-500



2

A RARE SET OF TEN VICTORIAN TEA SPOONS

Princess No.2 pattern, crested, by George Adams, London 1853 and two more to match (not crested), maker "S.S. LTD", Sheffield 1970; 13.5oz (12)

£80-100



5

A SET OF THIRTY ONE GEORGE IV TABLE KNIVES

with Fiddle & Thread pattern handles, crested, and steel blades, by Robert Peppin, London c.1825 (marks quite worn); 10.25" (26.5cm) long approx. (31)

£200-300



9

CHANNEL ISLES:-

An early 19th century Fiddle table spoon by John Le Gallais of Jersey and the following pieces with London hallmarks overstamped by him; five salt spoons, and two pairs of sugar tongs, mixed dates 1849-58, all initialled; 8.1oz (8)

£150-200



3

A MIXED LOT:-

A set of four Fiddle pattern dessert forks by William Eaton, London 1839, four other fiddle dessert forks, an oyster fork, two sauce ladles, a pair of sugar tongs, eleven condiment spoons, a pickle fork, thirteen tea spoons, a mother of pearl handled cake fork, & a George III poultry skewer, most pieces either crested or initialled; 31.3oz weighable silver (lot)

£250-300



7

A PAIR OF GEORGE III IRISH HOOK-END BASTING OR SERVING SPOONS

by John Craig, Dublin 1775; 13.1" (33.3cm) long; 6.9oz (2)

£100-200



10

CHANNEL ISLES:-

The following pieces by Jacques Quesnel of Jersey:- two pairs of sugar tongs, two table spoons, two dessert spoons, four tea spoons and a salt spoon, early 19th century, most pieces initialled; 8.4oz (11)

£180-220



11

CHANNEL ISLES:-

An early 19th century engraved table spoon and a tea spoon by Thomas de Gruchy and John Le Gallais of Jersey, and a Fiddle table spoon and tea spoon by Thomas de Gruchy, all initialled; 3.6oz (4)

£80-120



12

CHANNEL ISLES:-

Victorian Albert pattern flatware to include:-
One table spoon, one butter knife, one table fork and five single-struck tea spoons (most pieces initialled), all with London hallmarks and their maker's mark overstruck by that of John Le Gallais of Jersey, mixed dates 1849-1860; 13.1oz (8)

£170-200



13

CHANNEL ISLES:-

Seven various teaspoons (including a Guernsey militia example), two trefid spoons, a basting spoon, two table spoons, a dessert spoon, a sugar sifter ladle, a pair of bright-cut sugar tongs and two other unscribed pieces; 21.5oz (17)

£300-400



14

A COLLECTED PART-SERVICE OF FIDDLE PATTERN FLATWARE TO INCLUDE:-

Seventeen table forks, six table spoons, five dessert forks, two dessert spoons, two sauce ladles, two small sauce lades & a basting spoon, all with maker's mark "TKB", London 1890-1896, together with five dessert forks by Holland Aldwinckle & Slater, London 1904 (all of the above crested & initialled "R" and five various antique dessert spoons, initialled "F"; 94.6oz (45)

£750-850



15

A MIXED LOT OF FLATWARE:-

A pair of George IV Fiddle pattern sauce ladles, seven table spoons, a butter knife, a double-ended medicine spoon, a pair of sugar tongs and ten other spoons/forks, most pieces either crested or initialled; 35.4oz (22)

£300-400



16

A MISCELLANEOUS QUANTITY OF SWEDISH FLATWARE

including a cased set of six coffee spoons, many pieces with initials, mixed makers & dates; 58.5oz (lot)

£350-400



17

A PAIR OF GEORGE III SCISSOR ACTION CANDLE DOUTERS

with reeded, openwork handles and a sprung pivot, unmarked, c.1800, two George II salt shovels, and two caddy spoons; the douters 5.8" (14.7cm) long; 3.3oz (5)

£150-200



18

SIX LATER-DECORATED ANTIQUE TABLE SPOONS

with chasing and parcel-gilding (for use as fruit serving spoons), a similarly later-decorated sauceladle and a George V small handmade spoon; the latter 5.5" (14cm) long; 13.3oz (8)

£100-150



19

A LATE 19TH CENTURY PLATED-MOUNTED PICNIC SET

in a fitted leather case to include a collapsible beaker, a bone-handled folding spoon, folding knife (steel blade) and a folding fork and corkscrew, the case with gilt-tooled initials and date "1881", measuring 6.7" (17cm) long

£80-100



19A

A COLLECTED SERVICE OF OLD ENGLISH AND HANOVERIAN PATTERN FLATWARE

in a fitted oak canteen on legs with two drawers including:-
A set of twelve three-prong table forks and twelve three-prong dessert forks by Wakely and Wheeler, London 1947/48, eighteen various antique table spoons, twelve various antique dessert spoons, some initialled, and a set of twelve tea spoons by Peter, Anne & William Bateman, London 1802 and twelve table knives and twelve side knives (with simulated ivory handles and stainless steel blades); the canteen measuring 24" (61cm) wide overall; 101.9oz weighable silver

£1000-1300



20

A CASED SET OF SIX GEORGE V HANDMADE COFFEE SPOONS

with a hammered finish, the terminals with an applied wire heart and a cabochon-set aventurine glass boss, by Bernard Instone, Birmingham 1927; 1.5oz

£100-150



21
A SET OF TEN LATE 18TH CENTURY FRENCH SILVERGILT TEA SPOONS
 Fiddle, Thread & Shell pattern, with engraved coat of arms, by Jacques-Henri Alberti, Strasbourg c.1780 and another to match, by Henin & Co. Paris c.1900; 11.2oz (11)
 £100-130



22
A SET OF THREE LATE 18TH CENTURY MALTESE TEA SPOONS
 Old English pattern, initialled "B", maker's mark "UA" (Rohan period); 1.7oz (3)
 £100-120



23
A GEORGE III CANTEEN OF FIDDLE, THREAD AND DROP PATTERN FLATWARE (without shoulders) TO INCLUDE:-
 Twelve table spoons, twenty four table forks, twelve dessert spoons, ten dessert forks, six tea spoons & two sauce ladles, all by William Eley & William Fearn, London 1804 together with:-
 Six table spoons, six table forks & four tea spoons by William Eley & William Fearn, London 1798/1806 and
 Eight tea spoons by Richard Crossley, London 1800, all of the above crested to match
 204.5oz (106)
 £2500-3000



24
A VICTORIAN CASED SET OF TWENTY FOUR AGATE HANDLED DESSERT KNIVES
 and twenty four forks with scimitar blades and three tines, by Francis Higgins, London 1887 (some handles A/F); the knives 8.25" (20.5cm) long
 £300-500



25
A LATE 19TH / EARLY 20TH CENTURY AMERICAN SILVERGILT AND ENAMEL SERVING SLICE
 for dessert or cake, the scroll decorated handled with polychrome enamel highlights, by Gorham & Co., of Providence RI, c.1900; 10.6" (27cm) long; 4.3oz
 £150-180



26
CHANNEL ISLES:-
 A small group of seven pieces by Charles William Quesnel of Jersey, early 19th century to include:-
 two table spoons, three pairs of sugar tongs, a sauce ladle and a tea spoon, all with either initials, dedications or a crest; 9.8oz (7)
 £200-250



27
TWELVE VICTORIAN KING'S PATTERN TABLE KNIVES & FIVE SIDE KNIVES
 Seven Queen's pattern side knives and an Edwardian bread knife, mixed makers and dates (some crested & initialled, some initialled), steel blades; the bread knife 13" (32.5cm) long (25)
 £150-200



28
A PAIR OF GEORGE II IRISH SUGAR NIPS
 with a box pivot and chased decoration, initialled "WS", maker's mark unclear, Dublin 1740-50 (crowned harp & Hibernia); 5.25" (13.4cm) long; 1.5oz
 £100-130



29
A GEORGE III SCOTTISH PROVINCIAL SOUP LADLE
 Old English pattern with a circular bowl, initialled, by James Gordon of Aberdeen (IG, ABD), c.1790; 13.8" (35cm) long; 7.5oz
 £100-150



30
A SET OF SIX VICTORIAN SILVERGILT SALT SPOONS
 with chased whip ends, shell bowls and twist stems, by William Stocker, London 1879; 3.4" (8.5cm) long; 1.4oz (6)
 £100-150



31
A WILLIAM III TREFID SPOON
 with a thread-bordered, moulded rattail, scratched "EC" on the back of the terminal, with mullets, by Isaac Davenport, London 1699; 7.6" (19.3cm) long; 1.7oz
 £300-400



32
FIVE VARIOUS PAIRS OF GEORGE III SUGAR TONGS
 (three pairs with initials), mixed makers and dates; 4.75oz (5)
 £120-150



33
A GEORGE II MOTE SPOON
 by Elias Cachart, another with maker's mark "I.I" crowned? and a pair of naturalistic spoons, one by Francis Higgins, London 1852, the other unmarked; the latter 4.1" (10.5cm) long; 1.9oz (4)
 £150-200



33A
NEWCASTLE FLATWARE:-
 A set of six George III Old English pattern table spoons, initialled and crested, by Langlands and Robertson, Newcastle 1786, a set of six Fiddle table spoons, crested, by George Murray, Newcastle 1808, a set of four more to match, by Alexander Kelty, same date, a set of twelve Fiddle tea spoons, crested, also by Alexander Kelty (no date letters) and a game skewer, initialled by Langlands and Robertson, Newcastle 1786; the latter 8" (20.2cm) long; 43oz (29)
 £400-500



34
A SET OF SEVEN GEORGE III SCOTTISH TEA SPOONS
 & a matched set of four table spoons, all by Alexander Gairdner of Edinburgh, mixed dates Edinburgh 1789-c.1800, a set of three Scottish provincial tea spoons by Thomas Davie of Greenock, all of the above initialled "A" over "AK" and a set of six Scottish dessert spoons with pointed ends, initialled "AS" over "K", maker's mark "WA", Edinburgh 1795; 18.6oz (20)
 £200-300



35
A GEORGE I SERVING SPOON
 with a plain moulded rattail and the script initials "WMW" on the front of the terminal, by William Petley, London 1717; 12.2" (31cm) long
 *This spoon, originally Hanoverian pattern has been converted to Old English pattern by removal of its rib and "turning down" its terminal.
 £350-400



36
A GEORGE VI IVORY HANDLED PRESENTATION TROWEL
 not inscribed, by Deakin & Francis, Birmingham 1937; 9" (23cm) long
 £200-220



37
BY PAUL STORR:-
 A George III Hourglass pattern fish slice with a sprung upper blade, crested, London 1814; 12.5" (32cm) long; 9.25oz
 £300-400



38
A SCOTTISH FIDDLE TODDY LADLE
 initialled, by an unknown maker "WSJNR", Glasgow 1830, an unscribed mote spoon with a long stem, a diamond point and an elongate drop below the bowl, maker's mark "IB" and traces of another mark, 1725-40 and two Aberdeen tea spoons, initialled; the mote spoon 6.7" (17cm) long; 2.65oz (4)
 £120-160



39
A SET OF SIX GEORGE III OLD ENGLISH PATTERN DESSERT SPOONS
 crested, by George Smith and William Fearn, London 1787, a Fiddle sauce ladle, initialled, by Eley & Fearn, London 1823 and a condiment ladle, crested, by Richard Crossley, London 1805; the latter 4.5" (11.5cm) long; 9.2oz (8)
 £100-150



40
**KING'S PATTERN
 FLATWARE & CUTLERY:-**
 Two table spoons, six table forks, two dessert spoons and six dessert forks, by Charles Boyton, London 1896; a set of six tea spoons, crested, by J & A. Savory, London 1840; three Irish table spoons, together with a set of six table knives and four side knives, maker's mark "H.U", Sheffield 1964, a set of six side knives and two table knives by C.J. Vander Ltd., London 1963; 59.1oz weighable silver (lot)
 £400-500



41
**A PAIR OF GEORGE III
 SILVERGILT SUGAR SIFTER
 LADLES**
 Old English Thread pattern, by George Smith & William Fearn, London 1789; 2.7oz (2)
 £100-120



42
**A SET OF TWELVE GEORGE
 III TEA SPOONS**
 with shoulders, feather-edging and a twist pattern up the stems, by Thomas Chawner, London c1775, maker's mark & lion passant only; 6.4oz (12)
 £150-200



43
**A GEORGE II SCOTTISH
 PROVINCIAL TABLE SPOON**
 Hanoverian pattern with engraved crest and motto, by Thomas Johnstone of Montrose (T1, rose, B), c.1755; 2.25oz
 £200-250



44
**A QUEEN ANNE SCOTTISH
 TABLE SPOON**
 Hanoverian pattern, with a plain moulded Rattail and the scratched initials "IS" over "MW", by John Seaton of Edinburgh 1712 (Assay Master Edward Penman); 2.35oz
 £150-200



45
A MIXED LOT:-
 A George V basting spoon, a Victorian Bead pattern butter knife, a Victorian Venetian pattern sugar sifter spoon, a tea strainer, a napkin ring, a child's spoon "Little Miss Muffet", a cheese knife (stainless steel blade) and a pair of plated ice tongs; the basting spoon 12" (30.5cm) long; 10.4oz weighable silver (8)
 £100-150



46
**A SET OF SIX GEORGE III / IV
 DESSERT KNIVES**
 with mother of pearl handles and reeded ferrules, by John Mewburn, London 1820; 8" (20.3cm) long (6)
 £80-120



47
**A GEORGE III OLD ENGLISH
 PATTERN SOUP LADLE**
 by C & T Barker, London 1804, a basting spoon, initialled, maker's mark unclear, London 1803, a George III meat skewer and a pair of George VI serving tongs; the skewer 12.9" (32.8cm) long; 16.3oz (4)
 £150-200



48
**MISCELLANEOUS
 FLATWARE:-**
 Eleven various George III / IV dessert forks, twelve table forks and eleven tea spoons, each engraved with a crest & motto to match, together with a set of three Fiddle table forks, initialled by Richard Crossley, London 1805 and a small plated ladle; 51.9oz weighable silver (38)
 £500-550



49
**A PAIR OF LATE VICTORIAN
 SILVERGILT FRUIT SERVING
 SPOONS**
 with cast stems and pierced bowls, by Charles Edwards, London 1895 and seven other items; the servers 9.25" (23.5cm) long; 10.1oz (8)
 £80-120



50
**SCOTTISH FIDDLE PATTERN
 FLATWARE:-**
 A set of twelve dessert spoons, initialled "AAK", by R. Gray & Sons, Edinburgh 1810, a set of twelve dessert forks, by D.C. Rait, Glasgow 1839, a set of nine table spoons and a pair of basting spoons, by J. Neville, Glasgow 1821, all initialled "K" and a set of three tea spoons initialled "A" over "AK", maker's mark "RT", Edinburgh 1816 (all contained in an oak canteen box, measuring 18.6" (47.3cm) long; 64.78oz (38)
 £600-800



51
A SET OF SIX LATE VICTORIAN ENGRAVED FISH KNIVES AND FORKS

with carved mother of pearl handles, maker's mark "P.A. & S", Sheffield 1899, together with a set of six octagonal pistol-handled table knives (with stainless steel blades), Sheffield 1968 and a set of six tea knives with plated blades (24)

£200-300



52
A SET OF SIX GEORGE IV FIDDLE & THREAD PATTERN TABLE FORKS

initialled "CF", by William Chawner, London 1823/24, a set of five Scottish Fiddle pattern table spoons, initialled "IW", maker's mark "WC", Edinburgh 1824 and a set of three Scottish Fiddle table spoons, initialled "D", maker's mark "AW", Edinburgh 1848; 35.4oz (14)

£120-180



53
AN EDWARDIAN CANTEEN OF KING'S PATTERN FLATWARE:-

Four table spoons, six table forks, six dessert spoons and six dessert forks, the vast majority by H. Atkin, Sheffield 1903 & initialled "P", together with a set of six King's pattern table knives and six side knives (stainless steel blades), Sheffield 1958; 55.3oz weighable silver (34)

£600-800



54
A GEORGE V PART-SERVICE OF OLD ENGLISH PATTERN FLATWARE:-

Twelve table spoons, six slightly larger table spoons, twelve table forks, eleven dessert forks, and twelve dessert spoons, all crested, all by Walker & Hall of Sheffield 1920/21; 102.8oz (53)

£1000-1200



55
A QUANTITY OF MISCELLANEOUS ANTIQUE FLATWARE:-

Nine various Irish dessert spoons, five dessert forks, an oyster fork, seven Irish Fiddle rattail tea spoons, three Fiddle table spoons, a pair of Irish sauce ladles, an Irish basting spoon, an Irish skewer, a pair of sugar tongs, a butter knife & a toddy ladle; 39oz weighable silver (lot)

£250-350



56
ASSORTED ANTIQUE FLATWARE:-

A matched set of four Fiddle Thread dessert spoons, five Thread pattern dessert forks, a Fiddle table spoon, a George II table spoon and sixteen various tea spoons, most pieces crested; 28.8oz (37)

£200-300



57
TWO GEORGE III GAME/POULTRY SKEWERS,

a George III matching skewer and poultry skewer with shell and ring terminals, by Messrs. Eley, Fearn & Chawner, London 1809, all crested and two George III marrow scoops; the meat skewer 12" (30.3cm) long; 9.5oz (6)

£200-300



58
A PAIR OF GEORGE III OLD ENGLISH BEAD PATTERN BASTING SPOONS

by Thomas Northcote, London 1784 and a divider spoon, same pattern by George Smith and William Fearn, London 1795, all crested to match; the latter 11.9" (30.2cm) long; 9.65oz (3)

£150-200



58A
A MIXED LOT:-

A George III basting spoon, eight various table forks, a Fiddle pattern fish slice and a quantity of other items; 39oz weighable silver (lot)

£350-400



59
A PAIR OF VICTORIAN SCOTTISH PROVINCIAL FIDDLE PATTERN TODDY LADLES

initialled "M" and numbered "11" & "12", by Adam Burgess of Castle Douglas (B, castle, D, fouled anchor), c.1840; 2.1oz (2)

£200-250



60
A PAIR OF GEORGE III OLD ENGLISH PATTERN BASTING OR SERVING SPOONS
 with engraved crest and script initials, by Richard Crossley, London 1792; 11.5" (29.2cm) long; 6.2oz (2) £140-160



63
A PAIR OF EARLY VICTORIAN NATURALISTIC SUGAR NIPS
 with leafy, floral stems, insects (flies, ladybirds, etc.) and leaf bowls, by John S. Hunt, London 1838; 5.75" (14.7cm) long; 1.9oz £80-120



66
A GEORGE III SCOTTISH PROVINCIAL TABLE FORK
 Hanoverian pattern with three prongs, engraved with a crest below the motto "UNITE", by Michael Forrest of Canongate, c.1770; 8.5" (21.5cm) long; 2.1oz £150-200



69
FRENCH SILVERGILT FLATWARE & CUTLERY IN THE "REGENCE" TASTE TO INCLUDE:-
 A dessert knife (steel blade), for and spoon, six boullion spoons and five coffee spoons by E. Pouiforcat, Paris 1900-1920; the knife 7.8" (19.9cm) long; 15.1oz weighable silver (14) £150-200



61
A GEORGE IV SET OF TEN KING'S PATTERN TABLE KNIVES AND TEN SIDE KNIVES
 with steel blades, by William Chawner, London 1825, together with two similar table knives (one by R. Peppin, London 1820 and crested, the other by Moses Brent, London 1814) and two similar side knives, non-matching (24) £200-300



64
A GEORGE III PROVINCIAL TABLE SPOON
 Old English pattern, initialled "R" over "RC", maker's mark only struck four times, by John Ollivant of Manchester c.1765; 1.9oz £100-120



67
A GEORGE II SCOTTISH PROVINCIAL TABLE SPOON
 Hanoverian pattern, with engraved crest and motto, by Alexander Forbes of Aberdeen, c.1740; 8" (20.5cm) long; 1.8oz £150-200



70
A LATE VICTORIAN CASED PAIR OF GRAPE SHEARS
 with pierced and engraved decoration, by W. Gibson & J. Langman, London 1894, a set of six Fiddle pattern egg spoons with gilt bowls, initialled, by William Esterbrook, London 1819, two other Scottish egg spoons & a small fork; the latter 5.5" (14cm) long; 8.1oz (10) £80-100



62
A LATE 19TH / EARLY 20TH CENTURY RUSSIAN CLOISONNE-ENAMELLED CADDY SPOON OR SCOOP
 decorated in blues, white, green and foiled red, possibly by Ivan Saltikov, Moscow c.1900; 4.7" (11.8cm) long; 0.75oz £200-250



65
A WILLIAM & MARY TREFID SPOON
 with a reeded rattail, scratched "RB" over "RD" on the back of the terminal (with mullets) and initialled "B" on the front, by Thomas Issod, London 1694; 7.6" (19.3cm) long; 1.5oz £200-300



68
BY PAUL STORR:-
 A pair of George III table forks, Old English pattern, initialled "EJB", hallmarked London 1815; 7.75" (19.7cm) long; 3.85oz (2) £140-160



71
A PAIR OF EARLY VICTORIAN SAUCE LADLES
 Fiddle, Thread and Shell pattern, crested, by S. Hayne & D. Cater, London 1842, together with a George II sauce ladle with a pierced bowl and an engraved stem, initialled, and a George III Old English pattern sifter ladle, initialled; the latter 6.4" (16cm) long; 8.9oz (4) £130-170



72

A QUANTITY OF ASSORTED FIDDLE PATTERN:-

A set of six Victorian Scottish table spoons, nine various dessert spoons (four with initials), eight various table forks (two with initials), one plated table fork, and six various dessert forks (one with initials), mixed makers, dates & assay towns, George III - Victorian; 51.6oz (30)

£400-500



73

ASSORTED OLD ENGLISH PATTERN FLATWARE:-

Six table spoons, six table forks, thirteen dessert spoons and three dessert forks, all crested, mixed makers & dates 1791-1833; 42.2oz (28)

£400-450



74

A MIXED LOT:-

A set of six Fiddle dessert spoons by Jonathan Hayne, London 1831, a set of six Fiddle tea spoons by John James Whiting, London 1841, six various George III/IV Fiddle dessert forks & a set of six Victorian engraved tea spoons (all of the above initialled), a jam spoon, a sifter spoon, a pair of toddy ladles, crested, and a hand-made spoon with the applied initial "H" by John Gatecliff of Otley, hallmarked Chester 1916; the latter 6.25" (16cm) long; 31oz (lot)

£250-300



75

A HARLEQUIN OR COMPOSITE PART SERVICE OF IRISH FIDDLE PATTERN FLATWARE:-

Six table spoons, ten dessert spoons, seven teaspoons, and eight egg spoons, all crested to match, mixed makers and dates (all Dublin George III - Victorian); 30oz (31)

£200-300



76

A SET OF TWENTY ONE EARLY VICTORIAN IRISH TABLE FORKS

Fiddle pattern, crested, by Samuel Neville, Dublin 1838/39, together with a set of six George III Irish Fiddle pattern dessert forks, crested, by Thomas Townsend, Dublin 1817 (Retailer's mark of "LAW"); 58.9oz (27)

£500-600



77

A SET OF SIX VICTORIAN ALBERT PATTERN FISH KNIVES AND SIX FISH FORKS

with engraved blades and tines, initialled, by Martin, Hall & Co., Sheffield 1858/60 (loaded) and a set of twelve George V tea knives with plated blades (loaded) (24)

£70-90



78

A GEORGE III FISH SLICE

with two pierced blades, and a reeded handle (loaded), a pair of Victorian Queen's pattern fish servers (loaded handles), and a plated serving tongs, crested; the latter 11.25" (28.5cm) long (4)

£80-120



79

A 19TH CENTURY DANISH LARGE SERVING SPOON

monogrammed, by Anton Michelsen, Copenhagen 1868 and three other Danish spoons by the same maker, same date; the large spoon 14.2" (36cm) long; 12oz (4)

£80-120



80

SOUTH AFRICA:-

A set of three early 19th century Fiddle pattern table spoons, by Willem Godfried Lotter of the Cape; 6.1oz (3)

£250-300



80A

A SET OF TWELVE GEORGE III OLD ENGLISH PATTERN DESSERT FORKS

initialled and crested, by William Sumner, London 1787; 13.5oz (12)

£150-200



81
ANTIQU FIDDLE PATTERN SERVING PIECES:-
 A pair of fish slices with tines at the front, initialled "D", by William Eaton, London 1838, a pair of basting spoons, initialled "TED", by William Bateman, London 1832 and a soup ladle, also initialled "TED", by S. Hougham, London 1810; the latter 13.3" (34cm) long; 21.7oz (5)
 £200-300



82
A WILLIAM IV SCOTTISH BASTING SPOON
 (single struck, King's pattern with shoulders), initialled "W" by J. McKay, Edinburgh 1832, a pair of toddy ladles, initialled "N", and a pair of Oar pattern toddy ladles, initialled & numbered "1" and "2", maker's mark "WC", Edinburgh 1812; the basting spoon 12.5" (32cm) long; 7.35oz (5)
 £100-130



83
A SET OF SIX GEORGE IV / WILLIAM IV SCOTTISH PROVINCIAL FIDDLE PATTERN TEA SPOONS
 by M. Hinchcliffe of Dumfries (unicorn's head, K, fouled anchor, M. HINCHSLIFFE), 1825-35; 1.6oz (6)
 £100-120



84
A PAIR OF GEORGE III SCOTTISH PROVINCIAL TABLE SPOONS
 with pointed terminals, crested, by John Heron of Greenock (JH, fouled anchor, ship, C, greenoak) c.1800; 4.3oz (2)
 £150-200



84A
FOUR ANTIQU FIDDLE PATTERN SERVING PIECES:-
 An Irish fish slice, crested, Dublin 1825 (maker's mark partially rubbed, retailer's mark of "STEWART"), a basting spoon by Richard Turner, London 1815, another with an inscription on the back of the stem, by W.R. Sobey, Exeter 1839, and a soup ladle, initialled, by David Phillips, London 1836; the fish slice 11.5" (29.2cm) long; 19.7oz (4)
 £100-200



85
A PAIR OF LATE VICTORIAN CANDLESTICKS
 on stepped and beaded square bases with fluted columns and detachable nozzles, by Messrs. Richard Hodd, London 1877 (loaded); 9" (22.8cm) high (2)
 £150-200



86
A GEORGE V BASKET
 of rounded square outline, with a fixed handle & four short feet, by Sebastian Garrard, London 1912; 10.45oz
 £100-150



87
A WILLIAM IV TWO-HANDLED SUGAR BOWL
 with a squat circular body, engraved on one side with a coat of arms, by Paul Storr, London 1831; 5.75" (14.7cm) diameter; 12.9oz
 £400-500



89
AN EARLY 20TH CENTURY INDIAN THREE-PIECE EXHIBITION QUALITY "SWAMI" TEA SET
 on an elephant theme with richly chased and embossed decoration, finely detailed friezes around the sides and cast elephant-mask spout and handles, each vessel resting on three elephant foot supports, by T.R. Tawker and Sons of Madras 1900-1920 (maker's mark "T.R.T SILVER" struck once on each piece). The tea pot 6.5" (16.5cm) high; 38.75oz (3)
 £600-800



90
A GEORGE V SALVER
 of shaped circular outline with a moulded border and scroll feet, by J & W. Deakin, Sheffield 1921; 14.25" (36cm) diameter; 40.6oz
 £400-450



91
A PAIR OF GEORGE VI ART DECO REVIVAL CAFE AU LAIT POTS
 with tapering circular bodies, stepped decoration and angular handles, by Walker & Hall, Sheffield 1947; 7.4" (18.8cm) high; 26.85oz (2)
 £400-500



92
A GEORGE III PEDESTAL CREAM JUG
 with an engraved, hexagonal vase-shaped body, a helmet-shaped rim and a reeded loop handle, the cartouche with script initials, maker's mark of Samuel and Edward Davenport overstriking another, London 1796; 5.5" (14cm) high; 4.5oz
 £80-120



93
A GEORGE III NAVETTE-SHAPED SALVER
 with a reeded border and reeded bracket feet, by J. Crouch & Thomas Hannam, London 1788; 9.75" (25cm) long; 12.4oz
 £300-320



96
A LATE VICTORIAN EMBOSSED ROSE BOWL
 with a shaped rim and four vacant cartouches around the sides, by H. Atkin, Sheffield 1899 and a pair of late Victorian bonbon dishes; the rose bowl 8.25" (21cm) diameter; 22.85oz (3)
 £200-250



99
AN ELIZABETH II HANDMADE THREE-PIECE CONDIMENT SET
 with circular bodies, pierced bases and two matching spoons, the salt & mustard with blue glass liners, the mustard inscribed underneath "J. Dalvert - Garrard & Co., London",
 £150-200



102
A GEORGE VI VASE-SHAPED SUGAR CASTER
 by Edward Barnard & Sons, London 1939 and an octagonal sugar caster by E. Viner, Sheffield 1937; the latter 6.75" (17cm) high; 9.85oz (2)
 £100-130



94
A PAIR OF ELIZABETH II WINE COASTERS
 with convex sides and inset, turned wooden bases, maker's mark "CSR LTD", London 1973 and a smaller single example by J.B. Chatterley and Sons Ltd., London 1972; the latter 3.1" (8cm) diameter (3)
 £70-100



97
A GEORGE III SWING HANDLED SWEETMEAT DISH OR BASKET
 with pierced & embossed decoration, initialled, maker's mark "TF", London 1767 and late George III pap boat, maker's mark "TB", London 1817; the latter 5.1" (13cm) high; 5.75oz (2)
 £120-160



100
A LATE VICTORIAN TAPERING BEAKER
 with embossed floral and swirl-fluted decoration, vacant cartouche, by Mappin & Webb, Sheffield 1900 and a nest of six plated picnic beakers with gilt interiors, by the Goldsmiths & Silversmiths Co. (fitted leather case), the former 3.8" (9.7cm) high; 4.35oz weighable silver (2)
 £170-200



103
A VICTORIAN ENGRAVED COFFEE POT
 with a tapering cylindrical body & bead borders, inscribed on one side and crested on the other, by W & J. Barnard, London 1876; 8" (20cm) high; 19.3oz
 £150-250



95
A CHINESE TWO-PIECE BUCKLE
 with a pagoda and two dragons, maker's mark "WF" and character mark, c.1900, another Chinese two-piece buckle, two small Chinese knives, a napkin ring, a hair brush, a hairbrush mount (both with dragons) and an Indian parasol handle; the latter 4" (10cm) long; 4.4oz weighable silver (7)
 £120-150



98
A GEORGE V BALUSTER MUG
 inscribed, by H. Atkin, Sheffield 1928, a Continental Art Nouveau chain link bag or purse with English import marks for London 1903 and a Victorian embossed sugar bowl with the signs of the zodiac around the sides, initialled, by J.W. Johnson, London 1886; the mug 5.1" (13cm) high; 21.9oz (3)
 £200-300



101
A GEORGE III TEA POT, SUGAR BASIN, MILK JUG & TEA POT STAND
 (with inset wooden base), each of a similar design/style but by different makers, London 1800/1805; the tea pot 6" (15.3cm) high; 36.2oz weighable silver (4)
 *Sold with a bill of sale dated 1966 (for £213).
 £400-500



104
A GEORGE III SCOTTISH EGG FRAME
 of cruciform outline with reed borders, a decorative handle and ball feet, fitted with four egg cups, gilt interiors, by Mitchell & Russell, Glasgow 1819; 7.25" (18.5cm) high; 20.4oz
 £300-400



105

A VICTORIAN SUGAR BASIN

in the form of a scuttle with a hardwood rod handle and matching sugar scoop, the basin initialled "R" & crested, by Walker & Hall, Sheffield 1894/98; 6.2" (15.7cm) long; 10.2oz (2)

£250-300



106

A MIXED LOT:-

A George III snuffers tray, initialled, by John Emes, London 1807, an engine-turned cigarette case, a match box cover, a pair of Victorian salts, a pill box, a mounted glass toilet bottle, a mustard spoon, a fork and a plated fork; the snuffers tray 8" (20.5cm) long; 12.5oz weighable silver (10)

£150-200



107

A GEORGE V SWING-HANDLED SUGAR BASKET

with a wavy rim, pierced sides and bead borders (blue glass liner), by G. Nathan & R. Hayes, Chester 1911, and a Victorian embossed sugar caster, inscribed on the cover, by E. Finlay & H. Taylor, London 1890; the latter 6.2" (15.5cm) high; 9.25oz weighable silver (2)

£120-160



108

AN ELIZABETH II CAST FIGURE OF A DACHSHUND

by Garrard & Co. Ltd., London 1978; 5.7" (14.4cm) long; 9.65oz £100-150



109

A GEORGE V SMALL SALVER

of shaped circular outline by H. Wilkinson, Sheffield 1928, a Britannia Standard octagonal mustard pot with clear glass liner and matching spoon, blue glass liners, by Richard Comyns, London 1928; the salver 8.25" (21cm) diameter; 28oz (4)

£250-300



110

AN EDWARDIAN ART NOUVEAU VASE

by the Alexander Clarke Manufacturing Co., Birmingham 1909 and an Edwardian oval dressing table box with Art Nouveau decoration on the cover in low relief, gilt interior, maker's mark "wck", Birmingham 1901; the vase 6.5" (16.5cm) high; 17.5oz (2)

£170-200



111

A PAIR OF GEORGE V SAUCE BOATS

on three fluted legs with stepped hoof feet and gadrooned rims, by J & W. Deakin, Sheffield 1911; 7.7" (19.5cm) long; 17.7oz (2)

£150-200



112

A MIXED LOT:-

An early 20th century Indian embossed rose bowl with a vacant shield cartouche, a late 18th century Russian salt, and a George III plain oval cream jug, initialled "AB", maker's mark unclear, London 1797; the bowl 6.2" (15.5cm) diameter; 16.7oz (3)

£150-200



113

A WILLIAM III PORRINGER

with embossed part-fluting, a chased cartouche with scrolls, matting and an urn surmount, and a moulded rope-work girdle, scatched on the base with two sets of initials and the scratchweight "10-03", by Edward Wimans, London 1700; 5" (12.5cm) diameter; 9.4oz

£400-600



114

A GEORGE III COFFEE BIGGIN ON STAND WITH BURNER

decorated with reeded bands, the domed cover with a fluted acorn finial, crested, by John Emes, London 1799; 11.9" (30cm) high; 28.6oz

£300-400



115

A GEORGE III ENGRAVED CREAM JUG & MATCHING SUGAR BOWL

with wreath cartouches, gilt interiors and reeded, angular handles, crested, by John Emes, London 1800; each approx. 4.3" (11cm) high; 12.65oz (2)

£120-160



115A

A GEORGE III NORTH COUNTRY PROVINCIAL COFFEE POT

of vase form on a circular pedestal foot with reeded borders and a domed cover with a ball finial, crested, by John Langlands (II), Newcastle 1798; 12" (30.6cm); 22.35oz

£300-500



116

A MIXED LOT:-

A pair of Elizabeth II sauce boats on 3 legs, by R.W. Burbridge, Sheffield 1961 and an Edwardian silvergilt beaker, initialled and dated "1903" on one side, by D. Munsey, London 1902; the latter 4.8" (12.2cm) high; 21.7oz (3)

£200-300



117

A MIXED LOT:-

A small cigarette box, inscribed, a cased set of six coffee spoons, a mug, inscribed "Ann", a salt, a George IV cream jug, a plated wine label and a plated Norwegian spoon; the cigarette box 4.4" (11cm) long; 7.4oz weighable silver (7)

£80-120



118

A MISCELLANEOUS LOT:

A cigarette box, initialled, a small quail, a small sugar bowl, a mug, inscribed, a two-light dwarf candelabrum (loaded base), a pepperette and a cased set of six enamelled cocktail sticks; the mug 5.25" (13cm) high; 17.3oz weighable silver (lot)

£150-200



119

OLD SHEFFIELD PLATE:-

A pair of sauce tureens and covers with mounted ivory feet, crested, a waxjack and two Argyles; the tureens 7" (18cm) long (5)

£80-120



120

AN ELIZABETH II IRISH MUSTARD POT

with an s-scroll handle, moulded borders and a domed cover with a Connemara marble knob finial (blue glass liner), by the Royal Irish Silver Co. Ltd., Dublin 1967 (with English import marks); 4.9" (12.5cm) high; 9.95oz weighable silver

£100-150



121

A GEORGE III SWING-HANDLED SUGAR BASKET

on an oval pedestal foot, with reed borders, by John Robins, London 17898; 6.6" (17cm) long; 7.9oz

£250-300



122

AN EDWARDIAN / GEORGE V BRITANNIA STANDARD CUP & COVER

with part-fluting and twin handles, by Francis Higgins & Sons Ltd., London 1910 and a tapering coffee pot, crested, by Martin Hall & Co., Sheffield 1916; the latter 8" (20.2cm) high; 24.65oz (2)

£240-280



123

A GEORGE III INKSTAND

of rounded oblong form with a gadrooned border, paw feet and three mounted cut glass bottles, crested, by J.E. Terrey, London 1816; 10.0" (27.8cm) long; 25.5oz weighable silver

£300-400



124

A LATE VICTORIAN TUMBLER CUP

initialled and dated "Jan.7th 1947" on the base, with a script cypher on one side, by Alexander Smith, London 1901; 2.7" (6.8cm) diameter; 4oz

£80-120



125

A MATCHED PAIR OF GEORGE III WINE COASTERS

with pierced and engraved sides and wavy rims, turned wooden bases, crested, one by George Smith and Thomas Hayter, London 1801; the other by Robert Hennell, London 1806; 5.1" (13cm) diameter (2)

£250-350



126

A GEORGE I BRITANNIA STANDARD SMALL CASTER

with an octagonal, vase-shaped body and a bayonet-fitting, high-domed cover with a knob finial, maker's mark "Ne**", overstruck by another, London 1725; 5.5" (124cm) high; 5.2oz

*Probably either Anthony Nelme or Jonathan Newton.

£250-300



127

AN EARLY 19TH CENTURY FRENCH PIERCED MUSTARD POT

(blue glass liner), by Jean-Pierre Bibron, Paris 1809-1819, together with a silvergilt condiment ladle by Simon Beer of Lewes, Sussex (with London hallmarks for London 1987) and an Austro-Hungarian swing-handled sugar basket; the latter 4.25" (10.5cm) diameter; 7.4oz weighable silver (3)

£120-160



128

A GEORGE V SALVER

of shaped circular outline with a moulded border and scroll feet, by William Hutton & Sons, Sheffield 1928; 13.7" (34.8cm) diameter; 39.65oz

£400-500



129

AN EARLY 19TH CENTURY DANISH BOWL

of squat circular form with lobed decoration around the sides below chased foliage, a bobbin-bead border and plain rim, maker's mark "C.H" (incuse), Copenhagen 1915 (Assay Master C.F. Heise); 12.4" (31.6cm) diameter; 46.95oz

£500-600



130

A MIXED LOT:-

A pair of George V wirework vases of waisted form with blue glass liners, Chester 1919, two cigarette cases and four other items; the vases 5" (13cm) high; 9oz weighable silver (lot)

£80-120



131

A PAIR OF GEORGE VI SAUCE BOATS

with shaped rims & three legs, by Elkington & Co., Birmingham 1937; 7" (17.5cm) long; 10.95oz (2)

£100-150



132

A MIXED LOT:-

An Edwardian rose bowl, a Victorian two-handled nut dish with embossed fluting, a bonbon basket, a sugar caster and a George III pepper caster; the latter 5.7" (14.5cm) high; 24.7oz (5)

£200-300



133

A GEORGE V SMALL SALVER

with a gadrooned border, inscribed "SPARKFORD VALE HARRIERS POINT TO POINT 1930...", by J.B. Chatterly & Sons, Birmingham 1929; 8.25" (21cm) diameter; 10oz

£80-120



134

TWO ELIZABETH II GOBLETS

made to commemorate the 400 years since the founding of Harrow School, inscribed "1571-1971" and engraved with the arms of the school on one side of the bowl, maker's mark "P. LTD", Sheffield 1970 (each one contained in its lined & fitted box); 6.7" (17cm) high; 20.85oz (2)

£200-300



135

A GEORGE V SALVER

of shaped circular outline with a gadrooned border and ball & claw feet, by Harrison Brothers & Howson, Sheffield 1934; 12.5" (32cm) diameter; 39.3oz

£250-300



136

A GEORGE III ENGRAVED HELMET-SHAPED CREAM JUG

on a square pedestal base, maker's mark of George Gray overstriking that of Peter & Ann Bateman, London 1794; 5.5" (14cm) high; 2.95oz

£100-130



137

A SET OF FOUR GEORGE IV SALTS

with fluted circular bowls, gadrooned rims & fluted pedestal bases, crested, by R. Emes & E. Barnard, London 18925; 3.5" (9cm) diameter; 15.5oz (4)

£140-170



138

A GEORGE III CREAM PAIL

with a pierced swing handle and bands of incised reeding, initialled, maker's mark distorted, "T?", London 1807; 2.7" (6.7cm) high; 2.25oz

£200-250



139

A DANISH PLAIN CIRCULAR BOWL AND PYRAMID PATTERN SPOON

by George Jensen with import marks for London 1938, a 19th century Viennese mirror, rectangular with an engine-turned and engraved border, 1845 and a small South American cup; the bowl 4.75" (12cm) diameter; 10.1oz weighable silver

£150-200



142

A LATE GEORGE II CIRCULAR CHAMBERSTICK

with conical snuffer, crested, by William Cafe, London 1758 and a small decorative chamberstick with conical snuffer and detachable nozzle, inscribed "In memory of D.F. Gregory Obi. Feby.23rd 1842", by T.J & N. Creswick, Sheffield 1842; the later 4.25" (11cm) diameter; 14.7oz (2)

£250-300



145

A PAIR OF VICTORIAN ELECTROPLATED WINE COASTERS

with engraved and bead borders, a pair of small American, mounted glass coasters, & a pair of mounted glass ink bottles; the coasters 7.9" (20cm) diameter (6)

£80-100



148

A VICTORIAN RECTANGULAR TEA POT

with panelled sides, button feet and incurved corners, engraved all over in the Japanese taste with cranes & butterflies flying over swamps and amongst foliage, by W & J. Barnard, London 1886; 5.75" (4.5cm) high; 18.9oz

£200-250



140

A SET OF FOUR MID 20TH CENTURY FRENCH SMALL CIRCULAR DISHES

with collet feet and pelleted borders, by Gustave Keller, Paris (post 1838 marks); 7.5" (19cm) diameter; 50.4oz (4)

£400-500



143

A PAIR OF WILLIAM IV IRISH SALTS

with chinoiserie decoration, chased around the sides with buildings and a beehive in a watery landscape and resting on cast chinaman-mask feet, crested, by W. Nowlan, Dublin 1832; 3.25" (8.2cm) diameter; 8.9oz (2)

£150-200



146

AN EARLY 20TH CENTURY SWEDISH THREE-PIECE COFFEE SET

with fluted, baluster bodies and four feet, maker's mark "G.A.B" (incuse), probably by the Guldsmeds Bolaget, Stockholm 1922/25; the coffee pot 9.4" (24cm) high; 35.95oz (3)

£300-350



149

A GEORGE I CASTER

of vase form with a high-domed cover and knob finial, the body with chased and embossed floral decoration, crested, initialled "S" over "I.L." under the foot, maker's mark only (struck 6 times) & lion passant (once), by Thomas Bamford, London c.1725; 6.95" (17.5cm) high; 8.75oz

£250-350



141

A GEORGE V (GREAT WAR PERIOD) TWO-HANDLED TEA TRAY

of shaped rectangular outline with a moulded border and incurved corners, by the Goldsmiths and Silversmiths Co. Ltd., London 1916; 21.7" (55cm) long; 61.25oz

£500-700



144

A PAIR OF EARLY 20TH CENTURY DANISH BOWLS

with a hammered finish, slightly everted rims, decorated around the sides with widely spaced incised flutes and beads, maker's mark "O.A" (with a hammer)?, retailer's mark of "AUG. THOMSON", Copenhagen 1924 (Assay Master C.F. Heise); 7.9" (20cm) diameter; 20.9oz (2)

£250-300



147

A MIXED LOT:-

A late Victorian heart-shaped bonbon dish, a two-piece heart-shaped buckle by Mappin & Webb, a late Victorian pen tray, a Victorian mounted glass toilet box, a sauce boat, a sugar caster with engraving, and a powder compact; the latter 3.1" (8cm) diameter; 18oz weighable silver (7)

£200-250



150

**A VICTORIAN FOUR-PIECE
TEA AND COFFEE SERVICE**

Middle Eastern in style with chased formal decoration and spherical bodies, each piece with a vacant circular cartouche on each side, the milk jug, teapot and coffee pot with animal mask spouts and the pots with dragon finials, by Frederick Elkington, London 1871 (with Registered Design lozenge); the coffee pot 9.75" (25cm) high; 62.25oz (4)

£600-800



153

**A GEORGE V IRISH COFFEE
POT AND STAND**

in the style of a George I example with engraved cypher on one side and a coat of arms on the other, by E. Johnson Ltd., Dublin 1913; the pot 8.75" (22.3cm) high; 25.95oz (2) £250-300



156

**A LATE 20TH CENTURY
CAST SCULPTED FIGURE OF
A STALLION**

on an oval base, about to rear up, signed "Lorne McKean", sponsors mark "JP", London import-marked for 1975; 4.6" (11.7cm) high; 19.8oz £150-200



159

**A PAIR OF EDWARDIAN
DWARF CANDLESTICKS**

with fluted columns, decorated square bases and bead borders, inscribed by James Dixon & Sons, Sheffield 1907 (loaded); 6.75" (17cm) high (2)

£220-250



154

**AN ELIZABETH II COFFEE
POT**

in the George III style with gadrooned borders and baluster body, together with a milk jug to match, both by Nayler Brothers, London 1957/59; the coffee pot 10.6" (27cm) high; 29.6oz (2)

£250-300



157

**A PAIR OF ELIZABETH II
CAST OWL CONDIMENTS**

(one for salt; one for pepper), with glass eyes, by Richard Comyns, London 1968; 29" (7.4cm) high; 6.85oz (2)

£500-600



160

**A PAIR OF LATE 19TH
CENTURY AUSTRO-
HUNGARIAN DISHES**

of plain circular form with moulded rims, by J.C. Klinkosch, Vienna c.1900; 12.4" (31.5cm) diameter; 54.7oz (2)

£300-400



151

**AN EDWARDIAN PIERCED
MUSTARD POT**

with a high-domed cover & blue glass liner, by T. Bradbury, London 1905 (with matching spoon) and an early George III small baluster cream jug, initialled "LRM" underneath, by Walter Brind, London 1765; the latter 4" (10cm) high; 6.5oz weighable silver (2)

£80-120



155

**AN EDWARD VIII ART DECO
DRESSING TABLE SET**

decorated with pearlescent enamel and carved jadeite bosses in original fitted box, by W. Neale Ltd., Birmingham 1936; the box measuring 14.3" (36.5cm) long

£100-150



158

**AN EARLY 20TH CENTURY
CHINESE SWING HANDLED
BONBON DISH**

on four ball feet, with character marks and "SILVER", 1925-40; 7.75" (19.5cm) long; 5oz

£100-150



161

**A LATE VICTORIAN
PORRINGER**

with embossed decoration, twin s-scroll handles and a vacant oval cartouche, by Harris Brothers, London 1896 and a plated kangaroo menu card holder; the latter 3" (7.7cm) long; 6.65oz weighable silver (2)

£60-80



152

A GEORGE V TOAST RACK

on ball feet with seven arched bars, by Martin Hall & Co., Sheffield 1914 and a pair of small triangular toast racks by the same makers, Sheffield 1925; the larger one 6.3" (16cm) long; 15.4oz (3)

£140-160



162

A MIXED LOT:-

A pair of late Victorian vases with embossed decoration by William Comyns, London 1891 (loaded bases), a bonbon dish by William Comyns, London 1892, a French egg cup, a small cigarette box, a pair of sugar tongs, a mesh bag, three small mesh purses, and the following plated items:- a mesh bag, a small mesh purse and a pair of French sugar tongs; the vases 6.5" (17.5cm) high; 16oz weighable silver (lot)

£150-200



163

AN 18TH CENTURY ITALIAN BEAKER

no maker's mark, standard mark "85" and town mark only for Grasse*, probably dating from 1740-1780, and a late 19th century French wine taster, inscribed "JpmRichard"; the beaker 2.6" (6.8cm) high; 3.3oz (2) Footnote *Grasse (Grassa) was part of the Kingdom of Italy & belonged to the Duke of Savoy from 1388 until it was united with France in 1792.

£120-160



164

A SET OF SIX ELIZABETH II GOBLETs

on domed pedestal bases with flared bowls, by Joseph Gloster Ltd., Birmingham 1969; 18.35oz (6) £170-200



165

MISCELLANEOUS SMALL SILVER:-

A George V mounted cut glass, domed circular inkwell, an Edwardian sugar caster, initialled and dated "1909", a bonbon dish, a pepper caster, a late Victorian part-fluted tea caddy, a cream jug, a late Victorian embossed scent flask (in original fitted case) and a Continental snuff box, initialled "JL"; the latter 3.1" (8cm) long; 22.7oz weighable silver (8)

£300-350



166

A GEORGE V SMALL ROSE BOWL

with reeded borders and a frieze of applied studs and bosses below the rim, by Walker & Hall, Sheffield 1928 (wooden plinth); 6" (15cm) diameter; 10.25oz

£150-200



167

A GEORGE V SLIM RECTANGULAR SPIRIT FLASK

with rounded corners, a hinged, twist-open cover and pull-off cup, initialled "MJA", by James Dixon & Sons, Sheffield 1915; 6" (15.5cm) long; 9.7oz

£170-200



168

A GEORGE IV NORTH COUNTRY PROVINCIAL MUSTARD POT

oval with bands of incised reeding (blue glass liner & non-matching spoon), by Barber, Cattles & North, York 1825; 2.5" (6.3cm) high; 4.25oz weighable silver (2)

£100-130



169

A LATE VICTORIAN MOUNTED GLASS SPIRIT FLASK

of rounded oblong form with a screw-cap, secured by a chain and a pull-off cup, initialled "MJA" and crested, maker's mark "EOM", Chester 1897; 7.9" (20cm) long; 4.3oz weighable silver

£200-250



170

A GEORGE IV NORTH COUNTRY PROVINCIAL SUGAR BASIN

with batswing fluting, reeded loop handles and a border of gadrooning and foliate shells, by John Walton, Newcastle 1823; 5.6" (14.3cm) diameter; 12.1oz

£100-130



171

A GEORGE III ARCHED TOAST RACK

on four paw feet, by Samuel Whitford, London 1790 and a small late Victorian porringer with a coin-inset base, by Charles Stuart Harris, London 1884; the toast rack 6.25" (15.7cm) long; 14.2oz (2)

£100-200



172

A GEORGE V SET OF SIX ASPARAGUS HOLDERS

wedge-shaped with wavy sides, by J & W. Deakin, Sheffield 1910; 3.75" (9.6cm) long; 8.95oz (6)

£150-200



173

A GEORGE V MATCHING KETTLE ON STAND WITH BURNER, TEA POT AND MILK JUG

crested, by C. Boyton & Sons, Sheffield 1912; the kettle on stand 12.45" (31.5cm) high; 73.75oz

£500-600



174

A VICTORIAN THREE-PIECE TEA SET

with chasing and repousse-work decoration and the signs of the zodiac around the middle of the bodies, by Frederick Elkington, London 1877/78, together with an electroplated kettle on stand with burner, to match with an inscription on the base; the kettle 12" (30.5cm) high; 21.3oz weighable silver (5)

£200-300



175

A PAIR OF LATE VICTORIAN SAUCE BOATS

with leaf-capped flying scroll handles, crested & initialled "R", by Charles Stuart Harris, London 1895, a George III mustard pot on ball feet, with a blue glass liner, and a bachelor's tea pot with a rounded square body and foot, crested & initialled "R", maker's mark "TKB", London 1895; the latter 5.3" (13.5cm) high; 25.9 weighable silver (4)

£220-280



176

A GEORGE V TWO-HANDLED TRAY

of shaped square outline with a plain moulded border, engraved in the centre with a crest and motto, by Hawkesworth, Eyre & Co., Sheffield 1927; 16.5" (42cm) long; 53.35oz

£450-550



177

A GEORGE V THREE-PIECE CIRCULAR TEA SET

with shaped, moulded rims, gadrooned borders and pedestal bases, engraved crest & motto, by the Goldsmiths & Silversmiths Co. Ltd., Sheffield 1924; the tea pot 6.5" (16.5cm) high; 37.65oz (3)

£300-400



178

AN EARLY VICTORIAN MOUNTED CUT-GLASS CLARET JUG

with a vivid light green coloured, baluster body and a fruiting vine mount and handle, the cover & spout resembling an oyster shell, with a leafy finial, by Messrs. Barnard, London 1844; 11.25" (28.5cm) high

£300-500



179

AN EDWARDIAN SMALL SALVER

of shaped circular outline with a shell & scroll border and scroll feet, by the Goldsmiths & Silversmiths co. Ltd, London 1908, together with a waiter, inscribed, and a set of six egg cups, crested & initialled, maker's mark "TKR", London 1897 (loaded bases); the salver 8.8" (22.5cm) diameter; 18.65oz weighable silver (8)

£220-260



180

A LATE VICTORIAN HOT WATER JUG

on a three legged stand with burner, the baluster vessel with a cane-insulated loophandle, crested, maker's mark "TKB", London 1894; 12" (30.6cm) high; 18.65oz

£200-300



181

A LATE VICTORIAN PART-FLUTED TEA POT

oval, with an angular wooden handle, crested & initialled "R" by Elkington & Co. Ltd., Birmingham 1890; 6.5" (16.5cm); 20.2oz

£150-200



182

A GEORGE V TWO-HANDLED TROPHY CUP

with embossed drapery swags below the rim, inscribed "Taunton 7th April 1932 The Somerset Hunters Steeplechase...", by Walker & Hall, Sheffield 1929 (wooden plinth); 12" (30.8cm) high; 34.5oz

£300-400



183

FOUR VARIOUS TWO-HANDLED TROPHY CUPS

each with a presentation inscription (three relating to the Taunton Vale Hunt, and one to the Mendip Hunt), during the late 1920s and 1930s) by various makers, mixed dates (all with wooden plinths); the largest one 11.48" (28.7cm) high; 91.35oz (4)

£900-1200



184
A 19TH CENTURY CHINESE MUG
 of tapering form with a reeded foot, a scroll handle and inset glass base, the front engraved with a presentation inscription with a shield outline "Presented to Herbert H., Jollye RN... Hong Kong, 1st February 1866", by Leeching, with character mark also; 5" (13cm) high
 £200-250



187
A GEORGE V FOUR-PIECE TEA & COFFEE SERVICE
 with plain rounded bodies, gadroon & shell borders and curved feet, crested, by William Hutton & Sons Ltd., London 1911; the coffee pot 9" (22.8cm) high; 73.25oz (4)
 £700-800



190
A GEORGE III TWO-HANDLED CUP OF CAMPANA FORM
 with repoussé decoration and a vacant cartouche, by John Stamp and John Baker, London 1769 (in a lined & fitted Morocco leather case); 3.75" (9.6cm) high; 4.75oz
 £200-250



193
A GEORGE V DRESSING TABLE JEWEL BOX
 in the form of a demi-lune side table, decorated in relief on the legs & frieze with bell flowers & paterae, by John Round, Sheffield 1911 (lined); 4.25" (11cm) wide; 4.6oz
 £150-200



185
A LATE GEORGE II PEPPER CASTER
 inscribed "KYAN", an early George III example inscribed "PEPPER", a pair of Edward VIII small toast racks, a pair of Victorian Scottish Fiddle sauce ladles and a pair of Edward VIII Old English pattern sauce ladles; the toast racks 3.25" (8.2cm) long; 18.5oz (8)
 £200-250



188
A GEORGE II BALUSTER CREAM JUG
 on three legs with repoussé-work, floral scroll decoration & a vacant cartouche, maker's mark unclear, London 1755, another plain example by David Mowdem, London 1769 and a George III engraved cream jug on a square pedestal foot, London 1788; the latter 5.5" (14cm) high; 8oz (3)
 £200-300



191
A GEORGE III SHAPED OVAL TEA POT
 with a serpentine outline, engraved decoration and an ivory handle & finial, maker's mark overstruck by another, London 1789; 5.8" (14.7cm) high; 14.4oz
 £200-250



194
AN EDWARDIAN BRITANNIA STANDARD MINIATURE OR TOY CRUET FRAME
 fitted with two mounted glass bottles and three casters on steps, with dome feet, by Maurice Freeman, London 1907; 4" (10cm) long; 4.1oz weighable silver
 £250-300



186
A GEORGE V SALVER
 of shaped circular outline with a husk and scroll border, the centre with an engraved crest and a presentation inscription, by William Hutton & Sons Ltd., Sheffield 1910; 14.75" (37.5cm) diameter; 45.8oz
 £400-450



189
A LATE 18TH CENTURY CONTINENTAL CHALICE
 with a knopped stem and a beaded, circular foot (lacking a boss), engraved underneath with Arabic inscription, gilt bowl interior, unmarked, c.1785; 8.5" (21.7cm) high; 12.8oz
 £200-300



192
A GEORGE I / II TANKARD
 of tapering cylindrical form with a skirted base, a domed cover and a large scroll handle with a fluted scroll thumbpiece, the front engraved with a vacant foliate wreath cartouche, the base with a scratchweight "26oz 14 pw", by Richard Bayley, London 1727; 7.4" (18.8cm) high; 25.85oz
 £800-1200



195
A 20TH CENTURY EGYPTIAN CIRCULAR SALVER OR TRAY
 profusely decorated with engraving and flat-chasing; 11.6" (29.6cm) diameter; 15.35oz
 £150-200



196

ROYAL NAVY:

A pair of plated-mounted, turned wooden wine coasters, resembling the royal naval crown, together with a plated wine bottle cradle with a handle-operated mechanism for pouring the wine, oval wooden base; the coasters 6.5" (16.5cm) diameter (3)

£80-120



197

A GEORGE III BALUSTER CREAM JUG

on three legs, with a punch-beaded rim and a vacant cartouche, by Thomas Shepherd, London 1771 and another George III cream jug with an engraved initial "M" below an Earl's coronet, London 1762; each approx. 3.75" (9.5cm) high; 4.95oz (2)

£100-150



198

A LATE 19TH CENTURY CHINESE EXPORT BONBON BASKET

with a swing handle and four curved, bamboo feet, pierced and chased around the sides with a dragon, figures, birds amongst foliage, bamboo and chrysanthemums, maker's mark "WA" and Chinese character mark, 1880-1890; 7.5" (19cm) long; 4.5oz

£120-160



199

A GEORGE V THREE-PIECE TEA SET

of shaped rectangular outline with angular handles, reeded rims and bun feet, by S. Blanckensee & Sons Ltd., Birmingham 1927; the tea pot 6.25" (16cm) high; 31.3oz (3)

£400-450



200

AN EDWARDIAN OVAL TEA TRAY

with a broad rim, cut-out handles and a part-fluted border, by Walker & Hall, Sheffield 1907; 20.6" (52.5 cs) long; 60.95oz

£800-850



201

A GEORGE III ENGRAVED OVAL TEA POT

with two vacant wreath cartouches, Greek-key work around the cover and a frieze of acorns & oak foliage around the upper body, by Abstainando King, London 1805; 6.75" (17cm) high; 17.3oz

£240-260



202

A LATE 17TH / EARLY 18TH CENTURY SCANDINAVIAN / BALTIC BEAKER

of tapering form with embossed scrolling foliage and flowers around the sides, initialled "HTS" and "CJD" around the rim and the base inscribed as a prize "26th Middlesex Rifle Volunteers Company Drill Challenge Cup 1871", maker's mark "HB conjoined, town mark "F" in a shield, unascribed, c.1700; 4.5" (11.5cm) high; 3.55oz

£250-300



203

A GEORGE V IRISH "LIGHTHOUSE" SUGAR CASTER

with embossed decoration and a large vacant cartouche, by Charles Lamb, Dublin 1916; 7.3" (18.5cm) high; 8.9oz

£100-150



204

ROWING / SCULLING PRIZE:-

A late Victorian tapering beaker with formal reousse-work decoration and two inverted, heart-shaped cartouches: one inscribed "WALTER RYE BEAT SYDENHAM DIXON THAMES LONG COURSE 16TH NOV. 1878" by Stephen Smith, London 1878; 5" (12.7cm) high; 4.65oz

£100-150



205

A LATE 17TH CENTURY MOUNTED LEATHER MUG OR "BLACKJACK"

the mounts with lappet borders and later scroll engraving, the front of the vessel with an applied crest and knight's helm, unmarked; 6.6" (17cm) high

£600-800



206

AN ELIZABETH II COW CREAMER

with textured hair on her head and along her back, with a looping tail and a hinged cover with an applied fly, by Richard Comyns, London 1970; 5.95" (15cm) long; 4.9oz

£500-600



207

A GEORGE IV MUSTARD POT

with a leafy scroll handle, a gadrooned rim & incised concentric rings on the cover, by George Burrows, London 1822 (blue glass liner); 2.8" (7.2cm) high; 4.4oz weighable silver

£80-120



208

A VICTORIAN ENGRAVED CARD CASE

with vacant cartouche, by Nathaniel Mills, Birmingham 1851, an embossed porringer, initialled & dated "4th May 1897" by H. Woodward & Co., London 1897 and a George V mug, inscribed "JOHN", London 1925; the latter 3.8" (9.7cm) high; 14.5oz (3)

£200-250



209

A 19TH CENTURY GERMAN NOVELTY SMOKER'S COMPENDIUM

in the form of a water pump and trough on a circular base, a long looping handle (for snipping cigars), the trough for vestas with a textured outer finish (for striking), resting on four feet, maker's mark "K&S" (incuse), (date letter unclear), Hamburg 1860-80; 6.25" (16cm) high

£400-500



210

AN EDWARDIAN NOVELTY DRESSING TABLE BOX

in the form of a table with a serpentine outline, decorative scroll legs and lower border and a hinged cover (the interior with an inset metal base), by William Comyns, London 1902; 7.5" (19cm) long

£400-500



211

AN EARLY 20TH CENTURY IRAQI SMALL NIELLO-WORK COFFEE POT, A MILK JUG & A SUGAR BOWL

on three legs; the coffee pot 6.5" (16.5cm) high; 14.9oz (3)

£150-200



212

A MIXED LOT:-

A pair of Victorian knife rests, a Victorian milk jug, crested and initialled "R", a plated hand-bell and a Victorian dessert serving knife and fork, in a fitted case; the jug 3.75" 9.5cm) high; 5.5oz weighable silver (5)

£150-200



213

A LATE VICTORIAN ENGRAVED SALVER

of shaped circular outline with a beaded rim and a chased & pierced border, the centre engraved with a monogram, by Mappin Brothers, Sheffield 1895; 10.8" (27.5cm) diameter; 22.35oz

£200-250



214

A LATE VICTORIAN ENGRAVED SALVER

of shaped circular outline with garlands of flowers & birds, a bead border and ball & claw feet, by John S. Hunt, London 1886 (retailed by the Goldsmiths Alliance); 8" (20.2cm) diameter; 11.9oz

£100-150



215

A MIXED LOT:-

A Victorian small mug with two bands of incised reeding, inscribed, an Edwardian/George V mounted glass spirit flask, initialled, a George IV squat mustard pot, crested, and a late 19th century Dutch tobacco box, rectangular with engraving; the latter 5.4" (13.7cm) long; 15oz weighable silver (4)

£170-200



216

A PAIR OF GEORGE III CUSHION-SHAPED ENTREE DISHES AND COVERS

with gadrooned borders, incurved corners and detachable ring handles, the covers engraved on each side with a coat of arms, by Thomas Robinson, London 1805; 10.3" (26.5cm) long; 103.4oz (2)

£1400-1600



217

A VICTORIAN TOAST RACK

with seven bars and a rectangular tray base with an engraved foliate cartouche and button feet, maker's mark "C.E.N", Sheffield 1883; 6.25" (15.8cm) long; 10.9oz

£80-120



218

A LATE VICTORIAN IRISH DISH RING

of conventional form with pierced and embossed decoration and a rocaille cartouche, inscribed, by J. Wakely & F.C. Wheeler, Dublin 1894; 8.25" (21cm) diameter; 13.1oz

£400-450



219

A GEORGE IV EMBOSSED CIRCULAR SUGAR BOWL

with two vacant cartouches, leaf-capped, flying scroll handles and a gilt interior, by William Brown, London 1826; 6" (15cm) diameter; 15.75oz

£200-220



220
AN ART DECO REVIVAL SIX-PIECE CONDIMENT SET

architectural in form with steeped detail, the salts and mustards with blue glass liners, by Walker & Hall, Sheffield 1945/50; the peppers 3" (7.6cm) high; 10.3oz weighable silver (6)

£150-200



223
A LATE VICTORIAN FRUIT DISH

pierced all around the sides with floral and bird decoration, on three scrolling feet, by Walker & Brownfield Tolhurst, London 1899; 8.5" (22cm) diameter; 23.6oz

£200-300



226
A PAIR OF GEORGE III SCOTTISH SALTS

on shaped pedestal bases, with gilt interiors, by W & P. Cunningham, Edinburgh c.1800 (no date letters); 3.8" (9.7cm) long; 4.3oz (2)

£70-90



229
A VICTORIAN ENGRAVED KETTLE ON STAND

with burner and bead borders, crested, maker's mark overstruck by another & unclear, London 1879 (contained in a fitted oak box); 11.5" (29cm) high; 33.95oz

£350-400



221
AN EARLY VICTORIAN SILVERGILT NATURALISTIC BOX AND COVER

in the form of a fruit (glass liner), by Charles Fox, London 1839 and a George III/IV small fluted mug, initialled and inscribed "A fond Father and Mother's Gift to their Boy, on his attaining his first year May 8th 1821", by R. Emes & E. Barnard, London 1820; the latter 2.75" (7cm) high; 6oz weighable silver (2)

£170-200



224
A GEORGE V TEA POT

with a gadrooned border and bun feet, together with a cream jug and sugar basin in a similar style, all by S. Blanckensee and Sons Ltd., Chester 1930; the tea pot 5.25" (13.5cm) high; 30.4oz (3)

£370-400



227
A LATE VICTORIAN COFFEE POT

with a domed cover, knob finial, and a spreading circular foot, by T. Bradbury and J. Henderson, London 1878; 8.25" (21cm) high; 12.75oz

£160-180



230
A SET OF FOUR ELIZABETH II GOBLET

with bark-textured stems and flaring bowls with gilt interiors, maker's mark "WRS" in a trefoil, Birmingham 1971/72/73 and a Limited Edition "Bristol" goblet by the Barker Ellis Silver Co., Birmingham 1972; the latter 5.25" (13.3cm) high; 20.8oz (5)

£180-220



225
A GEORGE IV / WILLIAM IV EMBOSSED CREAM JUG

with a squat circular body and decorative feet, with naturalistic matted leaves and flowers around the body, a floral handle & rim, gilt interior, initialled, by Charles Fox, London 1830; 4.5" (11.5cm) high; 8.4oz

£120-160



222
A GEORGE VI CHILD'S DISH AND SPOON

with engraved decoration: a cow, a milkmaid, sacks of malt, a peaceful house, a boy & a kitten, with sponsor's mark of Asprey & Co., London 1938, and the facsimile signature of R.E. Stone (original fitted case) the dish; 6.6" (17cm) diameter; 8oz

£150-200



228
A GEORGE V SINGLE CANDLESTICK

with enameled decoration around the base, maker's mark "P&S", Birmingham 1911 and a plated wine coaster; the candlestick 5" (13cm) high (2)

£30-50



231

AN ELIZABETH II MOUNTED WOODEN PHOTOGRAPH FRAME

with embossed decoration, Britannia Standard, Birmingham 1990, an Edwardian bonbon dish by W. Neale, Chester 1908, a pair of smaller bonbon dishes by J & W. Deakin, Chester 1911, a tea strainer and a cased set of six tea spoons with a rifleman lying prone, in relief on the terminals, by Levi & Salaman, Birmingham 1922; the frame 8" (21cm) high; 9.35oz weighable silver (6)

£120-160



232

INTERESTING MISCELLANEA:-

A set of six Continental plated absinthe spoons, a mid 19th century Portuguese small salver, crested, maker's mark "MFD" (monogram), Oporto 1830-60, a Danish spoon by Georg Jensen, a set of three King's Husk pattern table forks by the Goldsmiths & Silversmiths Co. Ltd., London 1904 and a mother of pearl-handled knife; the salver 8.25" (21cm) diameter; 23.45oz weighable silver (12)

£200-250



233

TWO MATCHING PAIRS OF GEORGE III CIRCULAR SALVERS

with pierced and beaded borders and feet; one pair with an engraved coat of arms in the centre, by R. Jones & J. Scofield, London 1776, the other pair by John Scofield, London 1778; 8" (20.5cm) diameter; 46oz (4)

£500-600



234

A GEORGE II WAISTED SNUFFERS TRAY

with a shaped & moulded border, interspersed with shells, flat-chased decoration and four feet, crested, by John Cafe, London 1754; 8.25" (21cm) long; 11.25oz

£300-350



235

A GEORGE II BALUSTER CREAM JUG

on three legs with repoussé decoration, engraved initial "M" and Earl's coronet, by Benjamin West, London 1749 and another George II cream jug, initialled; each approx. 3.6" (9cm) high; 5.4oz (2)

£100-150



236

A SET OF FOUR GEORGE III SCOTTISH SALTS

boat-shaped with navette-shaped pedestal bases and scroll ends, by J. McKay, Edinburgh c.1800 (no date letters); 5" (12.8cm) long; 6.4oz (4)

£120-160



237

A PAIR OF VICTORIAN PLAIN CIRCULAR CHAMBERSTICKS

with dished bases, conical snuffers and detachable nozzles, engraved on each piece with a crest and an Earl's coronet, by Robert Garrard, London 1871/72; 6.2" (15.3cm) diameter; 29.85oz (2)

£600-800



238

A PAIR OF GEORGE V PEDESTAL BONBON DISHES

with three loop handles and pierced bowls, by Joseph Rogers, Sheffield 1911; 5.5" (14cm) diameter; 18oz (2)

£200-250



239

A MIXED LOT:-

A tubular dressing table bottle (for a brush), by Asprey & Co., London 1910, a rectangular vesta box inscribed "Nellie from Lucy...", London 1897, a capstan inkwell, a small trophy cup on stand, three small trophy goblets, a mounted steel cigar cutter, two pepperettes, a "Jersey can" pepper, initialled & dated "1902" and two plated items (a sovereign purse and a compact), the vesta box 5" (13cm) long; 14.35oz weighable silver (lot)

£180-220



240

A LATE 19TH CENTURY NORWEGIAN CREAM JUG AND SUGAR BASIN

with engraved Greek-key borders, monogrammed, by Nilius Thune of Khristiania, two Norwegian dishes (one monogrammed) and a 20th century Maltese blotter, inset with two Maltese coins; the latter 5.75" (14.5cm) long; 32.9oz weighable silver (5)

£250-300



241
A CHINESE CONDIMENT SET
 in the form of a coolie pushing a hand barrow, a Chinese model sailing raft, and nine various small dishes/trays; the condiment set 6" (15cm) long; 23.5oz (11)
 £250-300



244
A GEORGE V ELECTROPLATED ART6 DECO COCKTAIL SHAKER
 in the form of a hand bell, by Asprey & Co., with Registered Design No. 82033; 11.25" (28.7cm) long
 £80-120



247
A GEORGE V PLAIN MUG
 initialled, by the Godsmiths and Silversmiths Co. Ltd., London 1928 and a Victorian embossed mug, inscribed, by Messrs. E & J. Barnard, London 1864; the latter 3.75" (9.5cm) high; 12.6oz (2)
 £120-150



250
AN EARLY 19TH CENTURY SILVERGILT ROYAL ARCH MASONIC JEWEL
 with engraved inscriptions, undated and unmarked and a rectangular photograph frame with an applied mount in one corner, inset with two Regimental pips of rank (behind glass), by Mappin & Webb, London 1917; 8.25" (21cm) high (2)
 £120-160



242
A SMALL VICTORIAN CIRCULAR BOX
 with a screw cover, by Brownett and Jones, London 1880, a pill box by Synyer & Beddoes, Birmingham 1912 and a Victorian salt; the latter 2.25" (5.5cm) diameter; 4.4oz (3)
 £100-150



245
A 20TH CENTURY EGYPTIAN COCKTAIL SHAKER
 of plain conventional form; 8.4" (21.4cm) high; 13.8oz
 £200-300



248
A GEORGE V CHILD'S DISH AND SPOON
 with engraved figures from Peter Pan, the back of the bowl with a small inscription, by R.E. Stone, London 19467 (with Stones' facsimile signature), original fitted case; the dish 6.6" (16.7cm) diameter; 8oz
 £150-250



251
A LATE VICTORIAN SCOTTISH PROVINCIAL, LARGE MOUNTED WOODEN QUAIL
 carved on the handles and around the sides with Celtic knots, the centre with a domed boss, crested, by Ferguson and MacBean of Inverness (F&M, dromedary, INVS), also with Edinburgh hallmarks for 1897; 13" (33cm) long overall
 £300-500



243
A GEORGE III TEA CADDY
 with an oval, serpentine outline, engraved borders and a knob finial, the base inscribed "In memory of Mrs Dory. Dunn", by George Smith, London 1783; 5.75" (14.5cm) high; 13.3oz
 £300-400



246
A GEORGE III WINE GOBLET
 plain with a gilt interior and a reeded border around the foot, by John Emes, London 1807, together with another similar example by Elizabeth Morley, London 1813; the latter 6.5" (16.5cm) high; 15.9oz (2)
 £200-300



249
A GEORGE V MOUNTED CUT-GLASS DECANTER AND STOPPER
 by J. Grinsell & Sons Ltd., Birmingham 1911, together with a mounted glass preserve jar and a glass scent bottle; the decanter 10.3" (26.5cm) high (3)
 £50-80



252
A PAIR OF EARLY VICTORIAN BONBON DISHES
 in the style of 18th century Dutch baskets with latticework sides, cast, decorative borders and clear glass lines with star-cut bases, by Robert Garrard, London 1840; 7.3" (18.5cm) long; 14.1oz (2)
 £300-400



253

A GEORGE VI SWING-HANDLED FRUIT BASKET

of shaped oval outline with pierced and stamped borders, maker's mark "BG&Co", Birmingham 1937; 12" (30.5cm) long; 20.9oz

£200-250



254

A PAIR OF VICTORIAN COLLAPSIBLE PICNIC BEAKERS

in fitted leather cases, plain with stepped circular bases and gilt interiors, one initialled "MAW" (script); the other initialled "JGW" (script) and inscribed on the base "FROM HIS MOTHER", both by Walter and John Barnard, London 1887; approx. 3.75" (9.6cm) high; 13.55oz (2)

£500-600



255

A CONTINENTAL COW CREAMER

with curly horns and red hardstone eyes, with English import marks for Chester 1911; 5.4" (13.5cm) long; 4.35oz

£250-350



256

A GEORGE V FOUR-PIECE TEA SERVICE

with rounded rectangular bodies, winged paw feet and borders of gadrooning with foliate shells, the milk jug & sugar bowl with gilt interiors, by Edward Barnard & Son Ltd., London 1931; the hot water jug 9" (23cm) high; 66.45oz (4)

£400-600



257

A MIXED LOT:-

An early Victorian rectangular spirit flask, no maker's mark, London 1840, an Edwardian capstan inkwell (A/F), four spool-shaped napkin rings, a mounted pincushion/box and a mounted glass smelling salts bottle, inscribed; the flask (10cm) long; 4.5oz weighable silver (8)

£100-150



258

A VICTORIAN SILVERGILT MOUNTED CLEAR GLASS CLARET JUG

with a star-cut base and a pattern of mullets all over the body, the mount with bead borders, grotesque masks and a carousing figure finial, by John Figg, London 1863; 12.6" (32cm) high

£500-700



259

A GEORGE III SMALL BALUSTER MUG

with a leaf-capped scroll handle, and a spreading circular foot, initialled, maker's mark "W.T", London 1770; 3.6" (9cm) high; 5.6oz

£150-200



260

A GEORGE III / IV CIRCULAR CHAMBERSTICK

with reeded borders, detachable nozzle and non-matching snuffer, engraved with two crests on the dish & nozzle, by R. Emes & E. Barnard, London 1820; 6" (15cm) diameter; 11.7oz

£200-250



261

A GEORGE II BALUSTER MUG

on a spreading circular foot, with a scroll handle, crested, maker's mark unclear, London 1754; 5.25" (13.3cm) high; 11.8oz

£250-300



262

AN ART DECO LARGE SPIRIT FLASK

of rounded rectangular outline, with an engine-turned front & back and a hinged, twist-open cover, initialled "MRA", maker's mark quite rubbed, probably by James Dixon & Sons, Sheffield 1938; 8.4" (21.3cm) high; 16oz

£300-400



263

AN EARLY 18TH CENTURY GERMAN "LIGHTHOUSE" SUGAR CASTER

with a domed, bayonet-fitting cover (lacking finial) and a convex moulded, spreading foot, by H.H. Schuemacher, Wolfenbuttel, c.1735; 4.5"; 11.3cm high; 4.25oz;

£250-300



264

AN EARLY 19TH CENTURY TAPERING MUG

with ribbed moulding around the foot and rim and a decorative ram's mask and scroll handle, initialled "AR" on the front and struck three times on the base with the maker's mark "S.V", unascrbed, probably Colonial 1800-1830; 4.3" (11cm) high; 9.1oz

£300-400



265

A MIXED LOT:-

A Russian swing-handled sugar basket with engraved decoration, monogrammed, Moscow 1886, a Russian niellowork napkin ring, initialled, a Russian niellowork tot cup, Moscow 1862, a small Russian engraved salt and an unmarked porringer with a pierced handle, initialled, probably American, early 19th century; the latter 5.25" (13.2cm) long; 14.9oz; the latter long (5)

£200-300



266

AN ELIZABETH II REPLICAS OF AN ELIZABETH I PERIOD "BELL" SALT

in three sections, also with a detachable finial, by Barrowclift Silvercraft, Birmingham 1987; 6.9" (17.5cm) high; 8.95oz

£100-150



267

A GEORGE III CIRCULAR CHAMBERSTICK

with gadrooned borders, a conical snuffer and detachable nozzle, engraved with a coat of arms and initials, by John Emes, London 1805 and another similar example with engraved crest & initials, by John Mewburn, London 1816; each approx. 5.75" (14.5cm) diameter; 22.7oz (2)

£350-500



268

A MIXED LOT:-

An Elizabeth II sugar caster, a small octagonal cream jug, a small dish, a cased pair of Edwardian pepper casters and six antique salt spoons, each one initialled; the caster 8.25" (21cm) high; 15.8oz (10)

£150-200



269

A SWEDISH FLUTED BEAKER

gilt interior, Uppsala 1955, six other various smaller Swedish beakers, two Swedish napkin rings, a stick mount and five thimbles, a sewing tool, two small boxes, fourteen prize medals - all inscribed, and a badge; the large beaker 4.25" high; 20.7oz (lot)

£150-250



270

A GEORGE V SALVER

of shaped circular outline with a moulded border, inscribed front & back, another of shaped square outline with incurved corners, initialled, and a waiter by S.J. Phillips, London 1924; the latter 6.25" (16cm) diameter; 48.2oz (3)

£400-500



271

A GEORGE V PIERCED CIRCULAR FRUIT DISH

by E. Viner, Sheffield 1931, two sauceboats, and three toast racks; the dish 8.25" (21cm) diameter; 32.85oz (6)

£280-320



272

AN ELIZABETH II HANDMADE DISH

of shallow rounded oblong form on a circular collet foot, the centre set with the applied badge of the "EUGENICS SOCIETY" and inscribed along one side with a small inscription relating to "Sir Andrew Huxley, GALTON LECTURER at their centenary meeting of 17th Sept 1987" by Leslie G. Durbin, London 1975; 11.25" (28.5cm) long; 21.1oz

£500-600



273

A GEORGE III NORTH COUNTRY PROVINCIAL TEA POT STAND

oval with bead borders and ball & claw feet, crested, by J. Langlands & J. Robertson, Newcastle c.1784/85; 7.25" (18.3cm) long; 6.35oz

£170-200



274

A LATE 19TH CENTURY PLATED MOUNTED RUBY GLASS CLARET JUG

in the form of a cockatoo (hinge A/F), and another plated-mounted glass jug; the former 11.6" (29.3cm) high (2)

£30-50



275

A VICTORIAN ENGRAVED FOUR-PIECE TEA & COFFEE SERVICE

with fluted baluster bodies, scroll feet and C-scroll handles, by Edward & John Barnard, London 1852; the coffee pot 11.4" (29cm) high; 67.5oz (4)

£700-900



276

A GEORGE III DOUBLE-LIPPED CREAM JUG

with twin handles, reeded borders and a gilt interior, initialled, maker's mark partially rubbed, London 1800; 4.3" (11cm) high; 8.75oz

£100-150



277

**AN EDWARDIAN
THREE-PIECE SILVERGILT
BACHELORS' OR
AFTERNOON TEA SET**

with rounded oblong bodies, gadroon & shell borders and paw feet, by E.S. Barnsley, Birmingham 1904; the tea pot 4.25" (10.8cm) high; 16.1oz (3)

£120-150



278

**A PAIR OF EDWARDIAN
SMALL ROSE BOWLS**

with shaped and moulded rims, by A & J. Zimmerman, Birmingham 1905; 5" (12.5cm) diameter; 8.45oz (2)

£80-120



279

**AN EARLY VICTORIAN
ENGRAVED SALVER**

of shaped circular outline with a border of foliate scrolls and husks in relief with piercing, and large decorative scroll feet, the centre, with an engraved coat of arms and the inscription "Presented to Colonel Robert Christopher Mansel, Assistant Adjutant General, by the Inhabitants of the County of Limerick as a testimony of regard & respect for his conduct as a citizen and soldier during a long residence among them", by Robinson, Edkins & Aston, Birmingham 1842; 22.2" (56.4cm) diameter; 123oz

£1200-1600



280

**AN EARLY VICTORIAN
FOUR-PIECE TEA & COFFEE
SERVICE**

of melon-fluted form on polyfoil bases, with S-scroll handles, the tea pot & coffee pot with flower finials, crested, by J.C. Edington, London 1837/38 (retailer's mark of GREEN, WARD, GREEN); the coffee pot 9.4" (23.8cm) high; 74.2oz (4)

£900-1200



281

**A GEORGE III NORTH
COUNTRY PROVINCIAL
TEA POT**

of rounded oblong form with reeded borders and ball feet, by Dorothy Langlands, Newcastle 1812; 6.8" (17.3cm) high; 22.9oz

£300-400



282

**A PAIR OF EDWARDIAN
CUSHION-SHAPED ENTREE
DISHES & COVERS**

rectangular with gadrooned borders, foliate shells in the corners and detachable handles, by Harrison Bros. & Howson, Sheffield 1905; 11.25" (28.5cm) long; 116.95oz (2)

£900-1200



283

**AN EDWARDIAN THREE-
PIECE TEA SET**

with oval bodies, gadroon & shell borders and four feet, the handles with leaf wrapping, by W & G. Sissons, London 1904/06; the tea pot 7" (17.8cm) high

£400-500



284

**A PAIR OF EARLY
VICTORIAN WINE
COASTERS**

with pierced and chased scrolls around the sides and a cast foliate scroll rim, the inset bases with radiating flutes, crested, by John S. Hunt, London 1843 (incuse no. 1488); 6" (15cm) diameter (2)

£700-900



285

**A PAIR OF GEORGE III
SHAPED OVAL MEAT DISHES**

with gadrooned borders, engraved with a coat of arms and a crest, by Robert Garrard (II), London 1818; 14.25" (36cm) long; 53oz (2)

£800-1200



286

**AN ELIZABETH II FOUR-
PIECE TEA SET**

in the style of Paul de Lamerie with melon fluted bodies and a formal frieze of chasing around the upper bodies, the pots with mounted wooden finials and carved wooden handles, by Suckling Ltd., Birmingham 1950/53; the hot water jug 7.25" (18.4cm) high; 62.85oz (4)

£600-800



287
A PAIR OF GEORGE V MOUNTED GLASS BOTTLES
 of rectangular form with square stoppers, by Hollings and Hitchinson, Birmingham 1929; 7" (18cm) high (2)
 £80-100



290
A PAIR OF GEORGE V PEDESTAL BONBON DISHES
 with decorative wavy rims, initialled "T" in the centres, maker's mark "D.F" perhaps D. Fraser, London 1919; 6.5" (16.5cm) diameter; 16.85oz (2)
 £120-160



293
A VICTORIAN SMALL CHALICE GILT BOWL INTERIOR
 by John C. Salt, London 1877, a Victorian patent by W.J. Salt, London 1880 and two plated-mounted glass vessels; the chalice 4.4" (11cm) high; 6.1oz weighable silver (4)
 £70-100



296
A PAIR OF SMALL PEDESTAL DISHES
 with pierced rims, by E. Viner, Sheffield 1958, another slightly larger dish and a fruit dish with pierced decoration and ball feet; the latter 9.5" (23.5cm) diameter; 20.6oz (4)
 £250-300



288
A SUITE OF ONE LARGE AND TWO SMALLER LATE VICTORIAN SHALLOW DISHES OR TRAYS
 of asymmetrical outline with a textured crocodile or snakeskin finish, each inscribed "Arab" by J.N. Mappin, London 1892; the larger one 8.9" (22.5cm) long; 12.25oz (3)
 £250-300



291
A GEORGE V SMALL SALVER
 inscribed, by Carrington & Co., London 1931 and another of shaped square outline, also inscribed, maker's mark "S.S LTD", Sheffield 1979; the latter 7.5" (19cm); 22.1oz (2)
 £150-200



294
MISCELLANEOUS CONDIMENTS:-
 A William IV mustard pot, a pair of George V pierced oval salts, an Edwardian sugar caster, and three small mustard pots (all of the above with glass liners), together with two salts and a pepper caster; the sugar caster 5.75" (14.5cm) high; 18.5oz weighable silver (lot)
 £150-200



297
A QUANTITY OF TEN VARIOUS MOUNTED CUT-GLASS BOTTLES/CASTERS
 and two sugar casters; the larger one 7" (17.8cm) high; 7.3oz weighable silver (12)
 £150-200



289
AN ELIZABETH II SMALL DISH
 with an upswept handle, engraved in the centre with the arms of the Worshipful Company of Salters, by Nayler Brothers, London 1960, retailed by "Payne & Son, Oxford"; 6.5" (16.5cm) long; 3.85oz
 £70-100



292
A GEORGE V HANDMADE CIRCULAR MUFFIN DISH AND COVER
 with a lift-out liner and a mounted ivory finial and handles with chased detail, the whole with a hammered finish, resting on a collet foot, by Charles Boyton, London 1935, the body & cover engraved with Boyton's facsimile signature; 6.75" (17.2cm) diameter; 28.8oz
 £400-500



295
A MIXED LOT:-
 A square capstan inkwell with pen rests, a Continental tazza, a pair of octagonal salts, a pair of dwarf candlesticks, and a Peruvian small cigarette box; the latter 4.85" (12.5cm) long; 8.5oz weighable silver (7)
 £150-200



298
AN ELIZABETH II THREE-LIGHT CANDELABRUM
 with reeded branches, decorative borders and detachable nozzles (loaded column) by the Barker Ellis Silver co. Birmingham 1966; 14.5" (37cm) high; 26.9oz weight of branches
 £300-400



299
A LATE VICTORIAN EMBOSSED ROSE BOWL
 with a crimped rim and two vacant cartouches, by W. Gibson and J. Langman, London 1896; 7" (18cm) diameter; 12.1oz
 £200-220



302
A PAIR OF ELIZABETH II ASH TRAYS
 each centred by a cast regimental figure, by Garrard & Co., London 1965; 5.5" (14cm) diameter; 13.1oz (2)
 £300-320



305
A GEORGE V SMALL HANDMADE CREAM JUG
 with a bellied body, reeded neck and loop handle, by Theodore Rossi, London 1935 (retailed by "Rossi Norwich"); 3.5" (9cm) high; 5.9oz
 £80-120



308
A 19TH CENTURY SOUTH AMERICAN BOWL & COVER
 with two S-scroll handles, and a smaller two-handled bowl with chased decoration to include a sunburst; the latter 5.3" (13.5cm) wide; 27.5oz (2)
 £300-400



300
A LATE VICTORIAN PART-FLUTED SAUCE TUREEN AND COVER
 with loop handles and an oval pedestal foot, by R. Martin & R.E. Hall, Sheffield 1899; 9" (22.8cm) long; 21.5oz
 £400-500



303
A SET OF THREE ELIZABETH II ART DECO REVIVAL VASES
 by Walker & Hall, Sheffield 1964; 4.9" (12.5cm) high; 10.1oz (3)
 £200-300



306
A GEORGE V CIRCULAR SALVER
 with a bead border and an engraved circular cartouche in the centre, by Charles Alston, London 1925; 8.8" (22.5cm) diameter; 13oz
 £100-130



309
A LATE 19TH / 20TH CENTURY SOUTH AMERICAN MATÉ TEA CUP OR POT
 with applied gold detail and chased decoration; 5.25" (13cm) high; 4.1oz
 £150-200



301
A LATE VICTORIAN SUGAR CASTER
 pear-shaped with fluting, by H. Matthews, Birmingham 1900; 8.25" (21cm) high; 8.5oz
 £150-200



304
AN EARLY 20TH CENTURY INDIAN THREE-PIECE TEA SET
 with embossed circular bodies and elephant-mask handles, the spout of the tea pot in the form of an elephant mask with raised trunk, unmarked, 1900-1920; the tea pot 5" (12.8cm) high; 27.85oz (3)
 £300-400



307
AN ELIZABETH II LIMITED EDITION PARCELGILT DISH
 (for the 300th Anniversary of St. Paul's Cathedral), maker's mark "JB", London 1975 (retailed by Aurum Designs) in original box with certificate; 4.5" (11.5cm) diameter; 7.8oz
 £200-220



310
THIRTEEN VARIOUS SOUTH AMERICAN "SPOON" LUPUS OR CLOAK PINS
 the longest one 12.25" (31cm) long (13)
 £250-300



311
MISCELLANEOUS 19TH CENTURY SOUTH AMERICAN ITEMS TO INCLUDE:-
 A filigree hair piece, a chased mount, a Potosi silver mine oval weight/ingot, horse harness mounts, etc., the weight 2.5" (6.3cm) long; 19oz (lot)
 £300-350



312
A QUANTITY OF SOUTH AMERICAN VOTIVE EMBLEMS, PLAQUES, ETC.
 The largest one 9" (23cm) long
 £250-300



313
A LATE 19TH / 20TH CENTURY SOUTH AMERICAN LOBED OVAL DISH
 with chased animals and flowers around the rim and spurious marks for Mexico City (Assay Master BTON); 9.7" (24.5cm) long; 10oz
 £150-200



314
THREE VARIOUS SOUTH AMERICAN SMALL TWO-HANDLED CUPS OR DISHES
 and another with a single handle; the latter 3.7" (9.2cm) diameter; 16oz (4)
 £250-300



315
A SOUTH AMERICAN DISH
 with alternating plain and embossed panels, maker's mark partially unclear, Mexico City c.1900; 12" (30.5cm) diameter; 15.2oz
 £200-230



317
A PAIR OF 19TH CENTURY SOUTH AMERICAN CANDLESTICKS
 on embossed stiff leaf bases with a native Indian figure at the top of each column, and circular drip pans, unmarked; approx. 13.75" (35cm) high; 37.5oz (2)
 £500-600



318
A SMALL LATE 18TH / EARLY 19TH CENTURY SOUTH AMERICAN / HISPANIC TWO-HANDLED CUP
 maker's mark "FY", townmark & Assay Master's mark indistinct, a brazier with turned wooden handles, Assay Masters mark & date "LEIVA 77" and a 19th century mug; the latter 3.2" (8cm) high; 8.7oz (3)
 £150-200



319
A 19TH CENTURY SOUTH AMERICAN TWO-HANDLED CUP
 with a shallow bowl and an animal in the centre which rotates; 5" (12.8cm) diameter; 7.5oz
 £250-300



321
AN EARLY 19TH CENTURY SPANISH MOUNTED CUT-GLASS SUGAR VASE AND COVER
 with a gilt figure finial, maker's mark partially rubbed, "ROSEL...?", Barcelona 1820-40; 10.25" (26cm) high overall
 £300-400



322
AN EARLY VICTORIAN CREAM JUG
 with wrythen fluting, chased decoration and a cast, naturalistic handle, gilt interior, by J. Mortimer and J.S. Hunt, London 1841; 4.75" (12cm) high; 7.7oz
 £200-250



323
A GEORGE II CAST HARLEQUIN TAPERSTICK
 on a domed roccaille base, by John Cafe, London 1751; 5.4" (13.5cm) high; 5.7oz
 £500-600



324
A GEORGE III SHAPED OVAL MEAT DISH
 with gadrooned border and an engraved coat of arms, by Francis Butty & Nicholas Dumeé, London 1769; 22" (56cm) long; 64.5oz
 £1300-1400



325

A LATE 20TH CENTURY ITALIAN CAST FIGURE OF A PIGEON

realistically modelled, with textured plumage; 7.5" (19cm) long; 19.45oz
£200-300



326

A GEORGE V MOUNTED CUT-GLASS COCKTAIL SHAKER

of cylindrical form with shoulders and pull-off covers, by J. Grinsell & Sons, Birmingham 1935 (retailed by Sorley of Glasgow); 11.5" (29.2cm) high
£80-120



327

A GEORGE IV IRISH HOT WATER JUG

with a helmet-shaped rim, reeded C-scroll handle, and a hinged cover with a knob finial, inscribed on one side "Puella dulei mecum et amico Duis dilior AB. Sept. 1857", also initialled under the base & struck with French control marks, by William Nowlan, Dublin 1824 (retailer's mark of "LAW"); 8.25" (21cm) high; 21oz
£400-500



328

A MIXED LOT:-

A vase-shaped sugar caster, initialled, by Wakely & Wheeler, London 1910, another by A.E. Jones, another vase-shaped example, and three small toast racks; the larger caster 6.3" (16cm) high; 21.65oz (6)
£240-280



329

A MIXED LOT:-

A pair of candlesticks (loaded), a cased pair of brushes and a comb, monogrammed, a mounted tortoiseshell & glass dressing table jar, four other mounted glass items, and a cased set of four Victorian salts with blue glass liner; the candlesticks 7" (18cm) high; 8.4oz weighable silver (lot)
£180-220



330

AN EARLY 20TH CENTURY INDIAN SQUAT CIRCULAR TEA POT, SUGAR BOWL, CREAMS JUG & BALUSTER HOT WATER JUG

with serpent handle and profusely decorated bodies, together with an Indian small tray of canted square outline with a vacant shield cartouche in the centre; the tray 8.5" (21.5cm) square; 65.1oz (5)
£800-850



331

A GEORGE III CHAMBER STICK

on a navette-shaped base with reeded borders and a detachable nozzle, initialled, by John Scofield, London 1792 with non-matching stand by Robert Hennell, London 1785; the latter 6.75" (17.2cm) long; 11.5oz (3)
£150-200



332

A GEORGE III ENGRAVED OVAL TEA POT

with a part-fluted body and cover and a straight, tapering spout, by Soloman Hougham, London 1797, together with a George III Provincial two-handled circular sugar bowl (gilt interior), initialled on one side, by John Robertson and John Walton of Newcastle, c.1805 (no date letter); the tea pot 7" (18cm) high; 26.35oz (2)
£300-350



333

A GEORGE III VASE-SHAPED EWER OR JUG

with borders of bright-cutting and beading, the handle (now insulated for use with hot water), a Victorian addition by D & C. Houle, the front with an engraved cartouche, crested, maker's mark of Thomas Langford (overstriking that of another), London 1787; 13.2" (33.5cm) high; 24.75oz
£500-700



334

A PAIR OF GEORGE III SUGAR VASES

with part-fluted decoration, bead borders and square pedestal bases, the covers with urn-shaped finials, maker's mark "I.W" (script), London 1804; 7" (18cm) high; 15.25oz (2)
£500-700



335

A MIXED LOT:-

A George III small wine funnel, by Charles Fox, London 1816, a George III pap boat, an Elizabeth II "Armada" dish and a small toast rack; the latter 4.4" (11cm) long; 11.8oz (4)
£170-200



336
AN EARLY VICTORIAN ELECTROPLATED DOUBLE COASTER TROLLEY
 with wirework sides, small ivory casters and inset turned wooden bases with central bosses, crested, by Elkington & Co., c1850; 17" (43cm) long
 £200-250



339
A VICTORIAN DECORATIVE CREAM JUG
 on three legs, a Victorian engraved Christening mug, a pair of Victorian silvergilt-mounted cut glass toilet bottles, and a George III mounted travelling shaving brush, crested; the latter 3.25" (8.1cm) long; 6.5oz weighable silver (5)
 £150-200



342
AN EARLY 19TH CENTURY FRENCH CIRCULAR DISH
 with a reeded rim, maker's mark of "C. CAHIER" (incuse), Paris 1819-1838; 11.8" (30cm) diameter; 28.3oz
 £150-200



345
A GEORGE II COFFEE POT
 with a tapering body, tucked-in base and spreading foot, the domed cover with a cup and cover finial, engraved on each side of the body with a rocaille cartouche and underneath with the scratchweight "22-17", no maker's mark, London 1747; 9.25" (23.5cm) high; 23.6oz
 £400-600



337
A RARE GEORGE II IRISH PROVINCIAL CUP
 of campana form with twin, harp-shaped handles, a reeded girdle and a spreading circular base, engraved on one side with a crest, by Joseph Johns of Limerick, c.1735 (maker's mark and "STERLING"); 6" (15cm) high; 15.75oz
 £2500-3500



340
AN EDWARDIAN TROPHY CUP
 on a domed foot with a beaker-shaped bowl and an inscription relating to the "Sparkford Vale Harriers Point to Point of 1928...", by H. Wilkinson, Sheffield 1909 (wooden plinth); the cup 9.5" (24cm) high; 13.9oz
 £100-150



343
A LATE 19TH / EARLY 20TH CENTURY FRENCH SQUAT CIRCULAR VEGETABLE DISH AND COVER
 with cast rocaille handles and borders of chased scrolls with foliage, Paris post 1838 (maker's mark F.ugot, Bordeaux); 11.5" (29.2cm) wide overall; 46oz
 £500-600



346
PAUL STORR:-
 A pair of George III two-handled sauce tureens and covers on oval pedestal bases with gadrooned borders, the angular handles with foliate terminals, engraved on each side of the body with a coat of arms, the covers with reeded ring handles and an engraved crest either side, by Paul Storr, London 1805; 10.4" (26.5cm) long overall; 54.2oz (2)
 £4000-6000



338
A GEORGE III CIRCULAR SALVER
 with a bead border and beaded, bracket feet, by John Scofield, London 1782; 7.5" (19cm) diameter; 10.65oz
 £200-250



341
A GEORGE V CIRCULAR ROSE BOWL
 with a shaped and moulded rim and accompanying turned wooden plinth with a plaque (inscribed "MENDIP HUNT POINT TO POINT 1933..."), the bowl by Charles Stuart Harris & Sons, London 1923; 11.25" (28.5cm) diameter; 37.45oz
 £350-400



344
A GEORGE V SMALL TWO-HANDLED TROPHY CUP AND COVER
 inscribed "Blackmore Vale Hunt Point to Point Races 1926...", by the Goldsmiths & Silversmiths Co., London 1925 (wooden plinth); 10" (25.5cm) high; 16.8oz
 £140-180



347
A GEORGE V COFFEE POT
 of tapering form with a tucked-in base, a domed cover, knob finial and a faceted spout, by the Goldsmiths & Silversmiths Co. Ltd., Sheffield 1926; 11.1" (28.2cm) high; 25.15oz
 £250-300



348
A PAIR OF GEORGE III WINE COASTERS
 with part-fluting around the sides, gadroon & foliate shell borders and inset bases with an engraved coat of arms, by William Burwash, London 1814; 6.55" (16.7cm) diameter (2)
 £600-800



349
A GEORGE II SAUCE BOAT
 on three scroll feet, with a plain moulded rim and a leaf-capped, scroll handle, the base with the scratchweight "14-0", by Alexander Johnston, London 1755; 8.45" (21.5cm) long; 13.1oz
 £200-300



350
A LATE GEORGE III SET OF FOUR NECK-RING WINE LABELS
 with reeded borders, incised "CLARET", "PORT", "SHERRY" & "MADEIRA", by Charles Rawlings, London 1817; 2.5" (6.5cm) diameter; 29oz (4)
 £70-90



351
A SET OF THREE GEORGE III CRESCENT WINE LABELS
 with bright-cut borders; "PORT", "MADEIRA" & "CLARET" by Hester Bateman, London 1785-90 (maker's mark and lion passant only), two other George III crescent wine labels, a plated "SHERRY" label and a plated clip-on moustache guard for a glass or cup; the latter 2.6" (6.5cm) wide; 1.3oz weighable silver (7)
 £150-200



352
A SET OF THREE GEORGE III CRESCENT WINE LABELS
 with bright-cut borders; "BRANDY", "WHISKY" & "RUM", another plain crescent "RUM", all by Hester Bateman, London 1785-90 (maker's mark & lion passant only) and another plain crescent label "ELDER", by Peter & Ann Bateman, London 1798; the latter 1.55" (4cm) wide; 1.25oz (5)
 £150-200



353
THREE DISC WINE LABELS:-
 "WHISKY", "SHERRY" and "PORT" two by Grey & Co. and one by S. Mordan & Co. Chester 1935 and 1910 and a George III "BRANDY" label with an urn & ribbon surmount, maker's mark of Thomas Arnold, overstriking that of Hester Bateman, London c.1775; the latter 1.75" (4.5cm) long; 2.1oz (4)
 £150-200



354
A GEORGE IV "MADEIRA" WINE LABEL
 A "PORT" label and three other Victorian wine labels ("CLARET", "M" and a "WHISKY" leaf); the largest one 2.3" (6cm) long; 3oz (5)
 £150-200



355
FIVE GEORGE III AND ONE GEORGE IV SAUCE LABEL
 mixed dates and makers, the largest one "HARVEY" 1.1" (2.7cm) long; 0.5oz (6)
 £150-200



356
EIGHT VARIOUS GEORGE III WINE LABELS
 including a gadrooned "SHERRY" by Elizabeth Morley and a Bacchanalian "CLARET" by Phipps and Robinson; the latter 2.5" (6.3cm) long; 3.1oz (8)
 £150-250



357
WINE LABELS:-
 Two Elizabeth II labels (bunch of grapes and a ring), a George III small crescent, a mounted bear tusk "MOSELLE", crested, a Victorian "WHISKEY", a set of four plated cruciform labels (including one titled "COLONIAL") and four other non-precious labels, the tusk example 2.5" (6.4cm) long; 3.7oz weighable silver (13)
 £80-120



358
WINE LABELS:-
 A pair of cast fruiting vine labels, pierced "W. HERMITAGE" and "BURGUNDY" by C. Rawlings, London 1825 and a pair of mounted bottle corks with grapes & vine leaves by George Fox, London 1862; the latter pair 3.25" (8.2cm) long; 1.5oz weighable silver (4)
 £150-200



359

WINE LABELS:-

Eight various antique labels and an Old Sheffield plated crescent "W. PORT"; the latter 2" (5cm) wide; 2.25oz weighable silver (9)

£120-160



362

A GEORGE III BRIGHT-ENGRAVED TOOTHPICK BOX

rectangular with rounded ends, a concealed hinge and an initialled cartouche on the front, maker's mark only, by T. Phipps & E. Robinson, London c.1785; 3.5" (9cm) long; 1.7oz

£200-250



365

A 19TH CENTURY FILIGREE-WORK CARD CASE

with a hinged cover and a cartouche on top, inscribed "Sabin", the interior bezel inscribed "Christmas 1866", unmarked (original fitted case); 3.85" (9.7cm) long; 1.9oz

£100-150



368

A LATE VICTORIAN MOUNTED PINK GRANITE PAPERWEIGHT

in the form of a curling stone, by Kirwan and Bolding, Birmingham 1884; 2.95" (7.5cm) diameter

£100-150



360

A LATE VICTORIAN COMBINED VESTA, SOVEREIGN, CARD & CIGARETTE CASE

of plain rectangular outline with rounded corners, a sprung hinge and a sprung thumb clasp, gilt interior, by William Hornby, London 1898; 3.5" (9cm) long; 6.1oz (gross)

£250-300



363

A GEORGE III ENGINE-TURNED SNUFF BOX

of rectangular form with rounded corners & edges, gilt interior, probably by Thomas Hobbs, London 1803; 3.4" (8.6cm) long; 5.9oz

£100-150



366

A GEORGE III SILVERGILT RECTANGULAR VINAIGRETTE

with a row of shells around the sides and vine leaves with grapes in low relief on the cover, by Samuel Pemberton, Birmingham 1816 (original morocco leather case); 2" (5cm) long; 1.5oz

£300-400



369

AN ELIZABETH II 9 CT. GOLD-MOUNTED PEN KNIFE

with two stainless steel blades and engine-turned palettes, by S.J. Rose & Son, Birmingham 1971; 3" (7.5cm) long

£100-150



361

A LATE VICTORIAN PARCELGILT SCENT BOTTLE

of square section, engraved with scenes of children and a churchyard with a milestone for York (after Kate Greenaway), glass liner & stopper, monogrammed & dated "11th Sept 1885", by Sampson Mordan, London 1884; 2.1" (5.2cm) high

£120-180



364

AN EDWARDIAN NOVELTY MATCHBOX COVER

engraved with a lady & a gentleman, each taking a pig to market and a slumbering pig on the cover with a cut-out and the words "SCRATCH ME", by A. Barrett & Sons, London 1904; 3" (7.5cm) long; 2oz

£120-150



367

A GEORGE III FILIGREE-WORK SCENT BOTTLE CASE

with a cartouche on the cover, initialled "AL TO SG", the interior fitted with two small mounted glass bottles, unmarked, c.1800; 1.45" (3.5cm) high

£120-160



370

AN EDWARD VIII POCKET ANEROID BAROMETER AND THERMOMETER COMBINED

in a square, engine-turned case with a hinged cover, by Asprey & Co. Ltd., London 1936; 2.75" (7cm) square; 10.1oz gross.

£200-250



371

A VICTORIAN GILT-BRASS FIGURAL SEAL

with intaglio coat of arms and two other smaller brass seals with portrait bust terminals (one with an intaglio crest), the larger one 4.3" (11cm) high (3)

£60-100



374

A RARE LATE 19TH CENTURY BRASS FIGURAL VESTA CASE

in the form of a young lady in a pleated night dress with porcelain head & neck and suspensory ring, c.1890; 2.5" (6.4cm) high

£500-600



377

NELSON:-

A late 18th century enamelled copper patch box, oval with the portrait of Admiral Nelson on the cover, to commemorate the "Victory of the Nile, August 1798" and another enamelled copper patch box; the former 2" (5cm) long (2)

£200-250



380

A LATE 19TH / EARLY 20TH CENTURY CHINESE PARCEL-GILT BELT

made up of linked octagonal panels, chased with birds, fish animals, figures and a dragon (some panels pierced), c.1900, and an embroidered bead work sash; the belt 26.5" (67.5cm) long; 4.35oz weighable silver (2)

£100-150



372

AN EDWARDIAN 18 CT. GOLD VESTA CASE

of plain rectangular form with rounded corners, enamelled on the cover with a beautiful young lady in a pink dress with parasol and floral hat, pelting a racehorse, the scene titled "WHERE THOROUGHBREDS MEET", suspensory ring, by Percy Edwards Ltd., London 1909; 2.1" (5.2cm) long; 1.5oz

£3000-3500



375

A MIXED LOT:-

An early 19th century caparison in the form of a heraldic beast crest (loaded), a late Victorian match-box mount/taper holder, initialled and dated "1901" and a George III reeded snuff box with a presentation inscription inside, by Alice & George Burrows, London 1807; the latter 2.75" (7cm) long; 3.95oz weighable silver (3)

£150-200



378

A VICTORIAN BRASS-MOUNTED DARK GLASS SCENT BOTTLE

with a Mary Gregory style painted figure, four various enamelled copper boxes and another in the form of tricorn hat with a pin cushion cover; the latter 2" (5cm) long (7)

£100-150



381

A SMALL MOUNTED HORN SNUFFBOX AND COVER

of navette outline with a cartouche on the cover, inscribed "ROYAL CHARTER" and a late Victorian turned hardwood snuff box with an applied horseshoe on the cover, inscribed "BROWN Veterinary Surgeon, WARWICK" and a verre-églomisé boss in the centre; the horn box 2.3" (6cm) long (2)

£150-200



373

A VICTORIAN CAST WHISTLE

modelled as the head and neck of a thoroughbred horse with ears pricked and suspensory ring, maker's mark "JH" (incuse), probably by Joseph Hirst, London 1884; 2.3" (6cm) long; 0.8oz

£1000-1300



376

A CASED SET OF FOUR EARLY 20TH CENTURY FRENCH MENU CARD HOLDERS

with spring clips, each inset with a miniature watercolour of flowers (signed "?Le Maitre") behind glass, within reed and ribbon borders, two with English import marks for London 1911; 1.5" (4cm) high each

£200-300



379

AN EDWARDIAN DRESSING TABLE BOX

with embossed decoration, inscribed "MALLYDAMS SHOOT 21ST NOV. 1908", by Walker & Hall, Sheffield 1905, a Victorian engine-turned snuff box and an early 19th century Scandinavian hovedvansaeg; the latter 3.45" (8.8cm) high; 9.25oz

£200-300



382

TIN PLATE WORKERS COMPANY:-

A George V model of the Stuart lamp used in the arms of the company, inscribed and dated "5 May 1927", by H. Wilkinson, Sheffield 1926 (original card box); 3.1" (8cm) high; 1.7oz

£80-100



383
A GEORGE V BOOKMARK / PAPERKNIFE
 with a looping handle and a cast finial in the form of a lapdog by S. Blankensee and Son Ltd., Chester 1910; 6" (15cm) long; 1.5oz
 £80-100



386
A VICTORIAN CHATELAINE CLIP
 with ten chains dependant, by W.F. Garrud, London 1888 with twelve assorted fittings dependant; 9.5" (24cm) long overall
 £500-600



389
A LATE VICTORIAN NOVELTY MOUNTED PORCELAIN SCENT BOTTLE
 in the form of a bird's egg with bulbous screw cover and Registered Design No. 20772, by C. Saunders & F. Shepherd, Birmingham c.1887 (date letter partially rubbed); 2.5" (6.4cm) long
 £100-120



392
MISCELLANEOUS SMALL ITEMS:-
 Three mother of pearl-mounted folding fruit knives, a mother of pearl and steel penknife, two vinaigrettes, a simulated crocodile-skin card case, a Victorian vesta case with a whistle end, a button, a penknife with engraved sides, a George III bodkin, a chatelaine clip, a stamp box (A/F), a small hexagonal box, an agate seal, a wood & brass seal, a heart-shaped desk clip, inset with Connemara marble and a small Victorian gilt-metal locket; the latter 0.75" (2cm) long; 3.9oz weighable silver (lot)
 £200-300



384
A SCOTTISH PROVINCIAL PIERCED CIRCULAR BROOCH
 with a ship in sail, by Alexander Richie of Iona, with sponsor's mark "JCA" and hallmarked Birmingham 1934 and a George IV engraved vinaigrette with raised borders and a gilt interior, by either Thomas Parkes or Thomas Platt, Birmingham 1822; the brooch 1" (2.5cm) diameter; 0.65oz (2)
 £100-150



387
A VICTORIAN SILVERGILT MOUNTED CLEAR GLASS DUAL SCENT BOTTLE, VESTA CASE AND VINAIGRETTE COMBINED
 with also a hinged cover for pills and two spaces for a locket or small portrait image (behind glass), by Sampson Mordan, London 1868; 3.1" (8cm) high
 £400-500



390
A GEORGE V SMALL RECTANGULAR INKWELL
 with a hinged cover & gilt interior with two glass inkwells and two stamp pockets, the front feet doubling as a pen rest, maker's mark partially unclear, probably by Hayes & Co., Birmingham 1911; 3.1" (8cm) long
 £170-200



393
A GEORGE I OVAL SNUFF BOX
 with a stand-away hinge, and a mounted tortoiseshell cover with mother of pearl inlay and engraving, unmarked, c.1720; 3.25" (8.2cm) long; 2.2oz
 £200-300



385
A VICTORIAN POCKET ANEROID BAROMETER
 resembling a pocket watch with engine-turned decoration on the back, signed "L. Casella", the case by James White, London 1874 (leather outer case); 2" (5cm) diameter
 £150-200



388
A GEORGE V COMBINED SEWING CLAMP AND PIN CUSHION
 with its own adjustable clamp with a knurled wheel for mounting on a table top, by Sebastian Garrard, London 1931; 5" (12.5cm) high; 6.6oz
 £250-300



391
AN EDWARDIAN ENGRAVED CIGAR CASE
 fluted, to take three individual smokes, initialled and dated, gilt interior, by H. Woodward & Co., Birmingham 1905; 5.5" (14cm) long; 5.5oz
 £30-50



394
A LATE VICTORIAN VESTA CASE
 enameled on the front in monochrome to resemble a calling card with turned-down corner "Lesser Columbus Editor, Commerce, Talbot House, Arundel Street, London W.C.", suspensory ring, by L. Emmanuel, Birmingham 1893; 2.25" (5.6cm) long; 1.25oz
 £250-300



395
AN EDWARDIAN COMBINED PENCIL, FOLDING RULE
 (calibrated to 6 inches) and penknife with a steel blade, by William James Hornby, London 1905; 3.1" (8cm) long (closed); 0.95oz gross
 £200-250



396
A VICTORIAN PENCIL
 with reeded decoration and a citrine seal terminal, by Sampson Mordan, London 1847, a porte crayon by the same maker and a George II wine label "PORT", by Lewis Hamon*, London 1739-55 (no date letter); the pencil 5.5" (14cm) long; 1.25oz (3)
 *A rare maker's mark on a wine label, as this mark is usually noted on larger pieces and holloware, particularly tea caddies.
 £100-150



397
A LATE 19TH CENTURY MOUNTED TORTOISESHELL CARRIAGE TIME PIECE
 with floral mounts and ball feet, the white dial with blue numerals, French (Paris) movement, the case unmarked, c.1900; 3.1" (8cm) high
 £270-300



398
MINIATURES / TOYS:-
 A poodle, by Nathan & Hayes, Chester 1904, a cow by Levi & Salaman, Birmingham 1907, two chairs 1896 and 1903, a foal, London 1970, a Continental tripod table, and two mother of pearl-mounted folding fruit knives; the table 1.25" (3cm) high; 3.8oz weighable silver (8)
 £200-250



399
A MIXED LOT:-
 A late Victorian chased napkin ring, initialled (cased), two other napkin rings, also initialled, a small rectangular dish base, inscribed, a tea strainer, a mounted brush & a caddy spoon, initialled; the latter 3.5" (9cm) long; 6.5oz weighable silver (7)
 £100-130



400
A SIAMESE NIELLOWORK CIGARETTE BOX
 square with wood lining, by F.W. Margrett of Bangkok and a button-opening cigarette case, engine-turned with applied gold initials "MGA", Birmingham 1929; the latter 5" (12.7cm) long; 6oz weighable silver (2)
 £100-150



401
A GEORGE VI CIGARETTE BOX
 dated "20th June 1942" by J. Dixon & sons, Birmingham 1937, together with two cigarette cases, a plated Ronson lighter, initialled "RA" and a plated Dunhill lighter; the latter 1.4" (3.5cm) high; 6.6oz weighable silver (5)
 £150-200



402
A SMALL MIXED LOT:-
 A Victorian Scottish paper knife in the form of a basket-hilted sword, by Aitchison (of 80 Princes Street), a Victorian game or poultry skewer by George Adams, London 1855, a gilt-metal buckle with chased foliate decoration, a Mauchline-ware whistle "PARAGON & FORT CRESCENT, MARGATE" and a turned boxwood dispenser; the pen knife 6.8" (17.2cm) long; 3.3oz weighable silver (5)
 £200-250



403
A MIXED LOT:-
 A late Victorian two-piece buckle with pierced and engraved decoration, two thimbles, three small bookmarks, two folding fruit knives with mother of pearl palettes, a money clip made from a 5 Francs piece of 1868, a small handmade spoon, an Egyptian souvenir spoon, and five various napkin rings (two initialled); the small spoon 2.4" (6cm) long; 5.6oz weighable silver (16)
 £150-200



404
A VIENNESE ART NOUVEAU CIGARETTE CASE
 enamelled on the front with a beautiful young girl blowing smoke, amongst leaves, the interior dated "21. VII.28", with English import marks for London 1903; 3" (7.5cm) long; 2.5oz
 £150-200



405
A CONTINENTAL ART DECO MENAUDIERE OR COMPACT
 enamelled on the cover with a squire and his aide, encountering a gypsy encampment, in wooded countryside, the interior with two hinged covers & mirror, with English import marks for London 1931; 2.25" (5.78cm) long; 3oz gross
 £150-200



406
A LATE VICTORIAN ENAMELLED VASE

maker's mark "HL", Birmingham 1898 (A/F) and a Continental enamelled cigarette case with a fox hunting scene on the cover, initialled and dated inside, with English import marks for London 1929; the vase 4" (10cm) high; 7.8oz (2)
 £120-180



408
A PAIR OF CONTINENTAL MINIATURE OR TOY CHAIRS

with English import marks for Sheffi d; 1.8" (4.6cm) long; 2.5oz (5)
 £100-150



409
A MIXED LOT:-

A mounted tortoiseshell desk calendar, two small Swedish dishes, a travelling timepiece with engine-turned cover & base, initialled and inscribed, a George III / IV mounted glass powder box with screw-down cover, crested, two small boxes and small Spanish swordfish table ornament; the latter 6.5" (16.5cm) long (8)
 £150-200



407
A MIXED LOT:-

A mounted, turned wooden circular box, initialled & dated "1830", a 19th century pressed horn circular box, a Victorian Tonbridge-ware box with a stamp on the cover, a large plated padlock and key, a late 18th century French mother of pearl-mounted sealing wax holder, a child's pusher, a Victorian Diamond Jubilee medal in a fitted case, and two mother of pearl-mounted folding fruit knives, two small square Mexican pin dishes and a small circular stand with a fluted border; the latter 5" (12.7cm) diameter; 7oz weighable silver (lot)
 £150-200



410
AN EDWARDIAN CHILD'S RATTLE

with mother of pearl teethers, three mother of pearl-mounted folding fruit knives (one in a leather case), two other non-precious knives and a small box; the rattle 5.5" (14cm) long (lot)
 £100-150



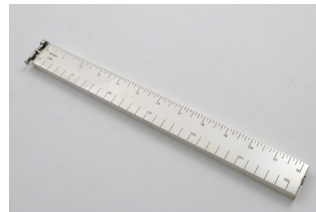
411
A LATE VICTORIAN VESTA CASE

with inset compass by Deakin & Francis, Birmingham 1897, a George III small seal incised "Elizabeth" (intaglio), a small Edwardian bookmark with a kangaroo finial, & a Dutch chain or clasp with a boot at each end; the vesta 2" (5cm) high; 2.45oz (4)
 £100-150



414
AN ELIZABETH II CAST PRESENTATION KEY

initialled "RFD" on one side, by Deakin & Francis, Birmingham 1973* (fitted case); 5.1" (13cm) long; 1.85oz
 *With a commemorative mark for the bi-centenary of the Birmingham Assay Office.
 £50-80



412
AN ELIZABETH II PLATED LIGHTER

in the form of a rule, calibrated in centimetres and inches, by Dunhill and Co., c.1955 (in original card box); 12.75" (32.5cm) long
 £150-200



415
A GEORGE III GOLD MOUNTED TORTOISESHELL SNUFF BOX

rectangular with chased borders, the cover set with a canted panel of red & yellow agate inside an oak leaf & acorn border (A/F); 3.5" (8.5cm)
 £80-120



413
A LATE 19TH / EARLY 20TH CENTURY CONTINENTAL OVAL DRESSING TABLE BOX

with a stamped frieze of working peasants around the sides and a romantic scene in relief on the cover, centred by a girl in a swing, gilt interior and pseudo marks on the base, c.1900; 5.5" (14cm) long; 8.5oz
 £100-150



416
A VICTORIAN ENGRAVED SCENT BOTTLE

of plain tubular form with floral decoration, finches and owls (emblematic of night & day), glass liner & stopper, by Sampson Mordan, London 1885 (original fitted case); 2" (5.1cm) long
 £140-160



417
AN EARLY VICTORIAN GOLD-MOUNTED BLOODSTONE SEAL
 with a faceted stem and a chased seal with bloodstone matrix and intaglio coat of arms, unmarked c.1840; 2.9" (7.2cm) long
 £400-500



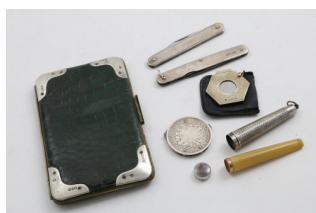
418
A LATE 19TH / EARLY 20TH CENTURY JAPANESE SHAKUDO VASE
 with character signature on the base, c.1900; 4" (10cm) high
 £100-150



419
A SMALL MIXED LOT:-
 A George III small mounted blue-john (Derbyshire flourspar) patch box with a pull-off cover, maker's mark only struck twice (indistinct), a small Chinese carved amber figure (A/F), a Continental cigarette case with a hammered finish and gilt interior, and a Japanese snuff box made of mixed base metals, with applied geese on the front; the latter 3" (7.6cm) long (4)
 £120-160



420
A LATE VICTORIAN "UNITY" PATENT VESTA CASE/CIGAR CUTTER
 with fluted decoration, by Horton and Allday, Birmingham 1895, five other various vesta cases (most with initials/crests), and three other small boxes; the patent vesta 2" (5.5cm) long; 7.5oz (9)
 £200-250



421
A LATE VICTORIAN MOUNTED GREEN CROCODILE-SKIN WALLET
 two penknives with steel blades, a mounted steel tool made from a 5 Francs piece of 1849 with two fold-out steel blades and a pair of scissors, a 9 ct. gold mounted cheroot holder in an engine-turned case, and a 9 ct. gold-mounted steel pocket cigar cutter, hexagonal with engine-turned decoration, by Alfred Dunhill, London 19781; the wallet 5" (13cm) long (6)
 £250-300



422
A GEORGE V 9 CT. GOLD COMBINED PENCIL, DIP-PEN AND PENKNIFE
 plain tubular form with a fold-out steel blade and slide action, inscribed "A.B. WINCH SCOTS GREYS 1912", by Sampson Mordan & Co. London c.1912; 3.5" (9cm) long (closed)
 £150-200



423
A LATE VICTORIAN MOUNTED, POLISHED STEEL POCKET KNIFE & MULTI-TOOL
 with plain pellets and suspensory ring, by Joseph Rogers, Sheffield 1894 and an engine-turned sovereign case by A & J. Zimmerman, Birmingham 1896; the knife 3.5" (9cm) long; 0.45oz weighable silver (2)
 £150-200



424
BOXES:-
 A George V tobacco "pebble", a Victorian engine-turned vesta case, a Victorian vinaigrette, a contemporary pill box, a mounted tortoiseshell dressing table box with inlaid decoration, a 19th century French circular papier-mâché box with an amusing print on the cover and a gilt-metal mounted tortoiseshell, memento-mori box; the latter 3.1" (8cm) diameter; 4.1oz weighable silver (7)
 £200-300



425
A LATE 19TH CENTURY AMERICAN TUBULAR NUTMEG GRATER
 with hinged cover and fold-down side, by the Gorham Co., 1895 and a George III nutmeg grater with a domed, lift-off cover, by Samuel Pemberton, Birmingham, 1792; the latter 1.25" (3.2cm) high; 1.75oz (2)
 £150-200



426
AN EDWARDIAN NOVELTY PINCUSHION
 in the form of a standing camel, stuffed and loaded, by Adie and Lovekin, Birmingham 1906; 2.7" (6.7cm) high
 £100-150



427

A RARE LATE 18TH CENTURY DUTCH MINIATURE OR TRAVELLING GAME

with a double-sided, parcelgilt board, square with a plain border (to prevent the pieces sliding off) and a suspensory ring, engraved on one side for chequers and on the other for nine men's morris, with thirty three small gaming pieces, maker's mark only "CVK", probably for Cornelis van Kleef, Hoorn 1790-1800, contained in a fitted leather travelling case with a compartment for the pieces and a recess for the board, with trade label of "Thomas, 153 New Bond St"; the board 2.55" (6.5cm) square; 1.25oz

£600-800



428

A VICTORIAN SILVERGILT NOVELTY VINAIGRETTE

in the form of a plumb bob with hinged cover & suspensory ring, unmarked; 1.25" (3cm) long; 0.4oz

£250-300



429

A LATE VICTORIAN CIRCULAR SCENT FLASK

with suspensory chain and screw cover, decorated on one side with an engraved flower and a dragonfly, and on the other with a finch & flower, each heightened by 3-colour gilding, unmarked, c.1880; 2" (5cm) diameter; 1.5oz

£150-200



430

A VICTORIAN ENGRAVED NOVELTY VINAIGRETTE

in the form of a handbag with chain handle and gilt interior, by Hilliard & Thomason, Birmingham 1882; 1.2" (3cm) long; 0.35oz

£150-200



431

A GEORGE IV "KITCHEN" NUTMEG GRATER

of tubular form with a loop handle and dished top, the hinged base with concealed hinge, crested, steel rasp, by John Reily, London 1822; 3.1" (8cm) long; 1.5oz

£400-500



432

A WILLIAM IV ENGINE-TURNED NUTMEG GRATER

in the form of a short tube with a pull-off base, pull-off domed cover, crested and a steel rasp, by C. Reily and G. Storer, London 1833; 2" (5cm) high; 1.55oz

£300-400



433

AN EARLY 18TH CENTURY GILT-METAL MOUNTED TORTOISESHELL TOBACCO BOX

oval with fine lappet borders and a domed cover & base, c.1700; 4.4" (11.5cm) long

£100-150



434

A LATE VICTORIAN ART NOUVEAU DRESSING TABLE BOX OR CASKET

on domed circular feet (lacking its hasp closure), by W.G. Connell, London 1899; 5.5" (14cm) long; 9.75oz

£400-500



435

AN EDWARDIAN ART NOUVEAU DRESSING TABLE BOX

of rounded rectangular form with turquoise-enamelled decoration on the cover by William Hutton & Sons Ltd., London 1905; 2.75" (7cm) long; 2.25oz

£200-250



436

SEWING / NEEDLEWORK:-

A rare late 18th century French two-colour gold embroidery etui/ tool of tapering cylindrical form with a domed cover, decorated with chased border-work and chiselled garlands of foliage in relief, the lower section with a spring-loaded clip to take one of four steel "hook" inserts (contained inside), by Jean-Marie Tiron, c.1775; 3.4" (8.5cm) long; 0.5oz

£700-900



437

A 19TH CENTURY CONTINENTAL SILVERGILT CASKET

of canted rectangular form with ball feet and decorative borders & set around the sides and on the cover with enamelled plaques, with lock & key and pseudo marks; 5.7" (14.5cm) long; 17.2oz (gross)

£250-300



438

A SMALL LATE 19TH CENTURY CONTINENTAL MOUNTED AGATE DISH

in the form of two cast putti under a tree on a domed oval base, with English import marks for London 1885; 4" (10cm) high

£250-300



441

A GEORGE III PLAIN CIRCULAR BOUGIE BOX

with a fold-out handle & reeded borders, initialled, unmarked, c.1780, and a George III caddy spoon with an engraved stem and a fluted bowl, initialled "A", by Peter & Ann Bateman, London 1798; the box 2" (5cm) diameter; 2oz weighable silver (2)

£150-200



444

A RARE LATE 17TH CENTURY MALTESE ENGRAVED SMALL FLASK

either for extreme unction or scent, in the form of a pilgrim flask with a screw cover, secured by chains, linked to a grotesque mask boss on each side, on an oval foot, each side decorated with scrollwork centred by a tulip flower, struck twice on the foot with the mark "MA" below a Maltese Cross, no maker's mark c.1690; 3.9" (9.5cm) high; 1.55oz

£700-900



447

AN EARLY VICTORIAN ENGRAVED RECTANGULAR VINAIGRETTE

by Nathaniel Mills, Birmingham 1840 (leather case), together with a Victorian engraved vinaigrette, initialled "E.S", by Davis Brothers, Birmingham 1932; the latter 2.7" (6.7cm) long; 3.6oz

£170-200



439

A LATE 19TH CENTURY VIENNESE SILVERGILT AND ENAMELLED VINAIGRETTE

in the form of a violin, a Viennese enamelled dish of shaped oval outline and a millefiori glass paperweight; the violin 3.95" (10cm) long (3)

£250-300



443

A GEORGE V MOUNTED STEEL PENKNIFE AND FOLDING RULE

calibrated to 6.25 inches, by William Manton, Birmingham 1927 and a Victorian ivory-handled seal with a bloodstone matrix and intaglio coronet and cypher; the latter 3.5" (9cm) long (2)

£120-160



445

A LATE 19TH CENTURY AUSTRO-HUNGARIAN COLD-PAINTED BRONZE NOVELTY PENWIPE

in the form of a lobster; 7.2" (18.2cm) long

£150-200



448

A CONTEMPORARY MOUNTED HARDWOOD AND ROCK CRYSTAL WAND OR POINTER

with cabochon-set garnets, unmarked; 10" (25cm) long

£50-100



440

A LATE 19TH CENTURY RUSSIAN CHEROOT CASE

of rounded oblong form with polychrome-enamelled flowers on the cover and a vacant cartouche on the base, gilt interior, maker's mark "AK", probably by Antip Kuzmichov, Moscow 1882, together with a Russian cigarette case, decorated on the cover in relief with a family of moujiks at the window of their cabin, 1908-1917; the latter 4.2" (10.8cm) long; 10.35oz (2)

£250-300



446

A LATE 19TH / EARLY 20TH CENTURY CHINESE OPIUM PIPE

with applied wire decoration, the bowl with a hinged butterfly-shaped cover, unmarked, c.1900; 8.3" (21.3cm) long; 1.4oz

£80-120



449

A LATE 19TH CENTURY CHINESE PAINTED FAN

with lacquered sticks, each side with a multitude of figures, each with an ivory face; 11" (28cm) long

£100-150



450
ENGLISH SCHOOL LATE 18TH CENTURY
 Miniature portrait of an officer wearing uniform, half length, oval on ivory; 4.5 x 3.5cm and a portrait of a gentleman, on ivory, c.1830; 6 x 5cm (2)
 £100-150



451
ENGLISH SCHOOL c.1840
 Three silhouette portraits, each heightened with gilt viz. a pair, each of a lady; 12.5 x 9.5cm and of a child; 17.5 x 12.5cm
 £60-100



452
ENGLISH SCHOOL LATE 17TH CENTURY
 Portrait miniature, probably of the poet George Herbert (1593-1633), head and shoulders oval, oil on card; 5 x 3.75cm in ivory frame
 £200-300



453
A SILK SCARF
 with printed satirical portraits centering on George IV and Queen Caroline ("Mr George King the Parish Overseer and one of the select Vestry"; approx. 74 x 82cm
 £50-100



454
A GOLD SIGNET RING
 set with a foiled glass intaglio, engraved with the coat of arms believed to be of Mary Stewart and initials MR; 2cm wide, together with a Victorian printed box with label "Queen Mary's Signet Ring, from the collection of the late Earl of Buchan"
 *There was a Mary Stewart, Countess of Buchan (1434/35). Queen Mary I used similar arms 1554-1558. The arms on the ring could be a Victorian creation.
 £200-300



455
PRINCE ALBERT
 An early Victorian gold and pale blue enamelled ring, set with an enamel portrait of Prince Albert and a small composition portrait.
 £200-300



456
JAMES II
 A gold Jacobite memorial ring, the single crystal with initials "JR" in gold wirework below
 £400-600



457
A GOLD RING
 set with a miniature portrait of a man, possibly the Duke of Marlborough, wearing a wig and armour, chased shank
 £400-600



458
A GOLD SIGNET RING
 the intaglio sardonyx stone engraved with a coat of arms, probably Continental
 £150-250



459
A GOLD SIGNET RING
 the octagonal intaglio stone of pink tourmaline, engraved with the Royal Arms & motto. The coat of arms could be for Henry Beaufort, 3rd Duke of Somerset.
 £300-500



460
AN IVORY PANEL OF CHARLES I AND QUEEN HENRIETTA MARIA WITH THEIR TWO ELDEST CHILDREN
 stippled and engraved after the portrait by Van Dyck; 3.5 x 4.25cm in gilt metal mount
 £100-150



461
AN ELIZABETH I WAX SEAL
 showing the Queen seated in State; 14.5cm dia. from a document and in original box
 £300-500



462
MARY, PRINCESS ROYAL
 (1631-1660)
 Marriage to Prince William II of Orange (1626-1650), silver strike from the obverse of the medal by Johann Blum 1641; 7cm and a button commemorating the marriage of Charles II and Catherine of Braganza (2)
 £150-250



463
QUEEN ANNE
 A tortoiseshell snuff box, the cover with embossed portrait of the Queen, interior signed by John O'Brisset (initials OB) silver mounts; 6.5 x 5.5cm and a silver medallion of her reign inscribed "Entirely English"; 3.5cm (2)
 £150-250



464
A STAFFORDSHIRE ENAMEL PATCH BOX
 shaped oval, the cover with portrait, possibly of Queen Charlotte wearing a hat, inscribed "Long Live The King"; 5 x 3.5cm
 £100-200



465
ENGLISH SCHOOL
 Miniature portrait of a lady wearing lavender silk jewelled hat and dress, half length, on ivory, oval; 5.5 x 4.75cm, inscribed on the reverse Lady Castlemaine, Duchess of Cleveland. P.L.
 £200-300



466
GEORGE III AND QUEEN CHARLOTTE
 A gold mourning ring with enameled portrait of the King and a silver and marcasite ring with portrait of Queen Charlotte
 £50-100



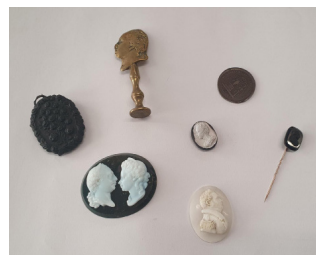
467
QUEEN ANNE
 A silver counter box with portrait of the Queen and initials "QA", maker's mark "TK" with three 4d coins 1705/10/15 and a sixpence 1711
 £50-100



468
GEORGE IV, QUEEN CAROLINE AND QUEEN ADELAIDE
 A brass box with portrait of Caroline 1820, another with portrait of Adelaide, a composition mourning portrait of Caroline 1821 and a sulphide portrait of George IV. Also a composition snuff box with portrait of George IV as Prince of Wales and two other items
 £80-120



469
A SET OF SEVEN ENAMEL SLIDES
 Each with portrait, probably of Queen Caroline; approx. 2.5cm
 £100-200



470
GEORGE III AND QUEEN CHARLOTTE
 A double sulphide portrait and another of George IV, a pin (Geo III) and a small portrait (Queen Charlotte). A composition mourning pendant (Queen Charlotte c.1818) and a copper medallion commemorating Princess Charlotte (d.1817) and a brass pipe stopper, George III (7)
 £100-200



471
FIVE SILK EMBROIDERED PIECES, ROYAL HERALDRY
 £30-50



472
A GEORGE III GOLD FOB SEAL
 the hardstone intaglio carved with a fox hunting scene; 3.75cm dia, a mounted intaglio carved with two pointers and four glass examples unmounted (hunting or nautical) (6)
 £100-200



473
MASONIC
 A papier mache snuff box, painted with various emblems in gilt; 8.5cm, early 19th century, together with a gold pendant 1878, three pendants (brass or silver, 18th/19th century) and four other items (9)
 £100-200



474
A VICTORIAN GOLD COMBINED PEN AND PROPELLING PENCIL
 engraved hexagonal body and bloodstone terminal; 9.5cm
 £100-200



475
MRS ANNE MEE

Miniature portrait of a lady wearing white gauze veil and silk dress, half length, oval on ivory; 8.5 x 6.75cm in gold frame with hair-work reverse

£400-600



475A
CIRCLE OF MRS ANNE MEE

Miniature portrait of a young naval officer wearing uniform, half length, oval, on ivory; 7.5 x 6cm in gold frame

£300-500



485
A PAIR OF ENAMEL FLASKS AND STOPPERS

of bottle shape, the bodies each with three reserved medallions, probably Viennese, late 19th century; 11cm high

£100-200



476
EARL HOWE

A gold anchor pendant inscribed "Earl Howe 1st June 1794"; 4cm (This commemorates the victory of the "Glorious First of June" when Richard Howe, 1st Earl Howe 1726-99 was in command of a British Fleet which defeated the French), together with a gold locket dated 1823 and an enamel and gold locket dated 1849 (3)

£150-200



477
A VICTORIAN IVORY HAND PENDANT

with jewelled gold serpent mount; 7cm, another in ivory and coral and a parrot's head pin (3)

£100-200



478
A CUT-GLASS AND SILVER SCENT BOTTLE

Birmingham 1919 and three trinket boxes, heart-shape Birmingham 1906, oval Birmingham 1919 and circular Birmingham 1917 (4)

£100-150



479
A CREAM JUG

decorated in Art Nouveau style, Sheffield 1905, a George III punch ladle, inset with a coin of 1707, a pair of George II sugar nips and a pair of sugar tongs, Sheffield 1904 (4)

£100-150



480
A VICTORIAN RUBY GLASS SCENT BOTTLE

and various small pieces, including a plated compact and sovereign case, silver vesta holder and two silver and mother of pearl pocket knives, Sheffield 1868 and Sheffield 1904 (5)

£100-150



481
A CONTINENTAL PORCELAIN SNUFF BOX

two compartments with hinged covers, the body painted with flowers and lovers on the interior, English silver gilt mounts, hallmarked 1811; 8 x 6.5cm

£200-300



482
ENGLISH SCHOOL 19TH CENTURY

Two portraits of children with sepia background and heightened with gilt and three others; 16 x 22cm and 18x11cm (5)

£80-120



483
A GERMAN PORCELAIN SNUFF BOX

painted with lovers; 7cm, a Naples box embossed with cherubs; 6cm, a Staffordshire enamel patch box painted with a horse and rider; 4cm and five other boxes (8)

£100-150



484
ATTRIBUTED TO FREDERICK BUCK

Miniature portrait of an officer wearing uniform, half length, oval on ivory; 6.5 x 5cm

£300-400